

***Fusobacterium nucleatum*, Strain CTI-06**

Catalog No. HM-996

Product Description:

Fusobacterium nucleatum (*F. nucleatum*), strain CTI-06 was isolated in 2012 from colonic tumor tissue from a human patient with colorectal carcinoma in Massachusetts, USA. HM-996 was produced by the inoculation of BEI Resources seed lot 63140982 into Modified Chopped Meat medium and incubated for 3 days at 37°C in an anaerobic atmosphere (< 5% O₂; Remel™ Pack-Anaero™). Broth inoculum was added to Tryptic Soy agar with 5% defibrinated sheep blood kolles, which were grown for 3 days at 37°C in an aerobic atmosphere to produce this lot. Quality control testing was completed under propagation conditions unless otherwise noted.

Note: Quality control of HMP material is only performed to demonstrate that the material distributed by BEI Resources is identical to the deposited material. It should not be considered a complete characterization of the deposited organism.

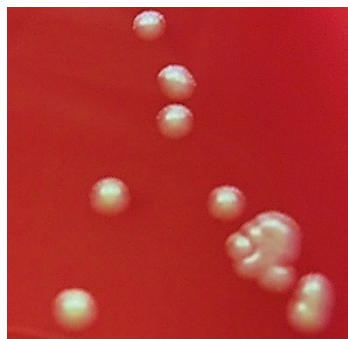
Lot: 70058401

Manufacturing Date: 16FEB2023

TEST	SPECIFICATIONS	RESULTS
Phenotypic Analysis Cellular morphology Colony morphology Motility (wet mount)	Gram-negative rods Report results Report results	Gram-negative rods Circular, convex, entire, opaque and gray Non-motile
Genotypic Analysis Sequencing of 16S ribosomal RNA gene (~ 1180 base pairs)	≥ 99% sequence identity to <i>F. nucleatum</i> , strain CTI-06 (GenBank: AXNV01000069.1)	99.9% sequence identity to <i>F. nucleatum</i> , strain CTI-06 (GenBank: AXNV01000069.1) ¹
Purity (post-freeze) Anaerobic 7 days at 37°C on Tryptic Soy agar with 5% defibrinated sheep blood Aerobic with 5% CO ₂ 7 days at 37°C on Tryptic Soy agar with 5% defibrinated sheep blood	Growth consistent with expected colony morphology No Growth	Growth consistent with expected colony morphology No Growth
Viability (post-freeze)	Growth	Growth

¹Also consistent with other *Fusobacterium* species.

Figure 1: Colony Morphology



/Sonia Bjorum Brower/
Sonia Bjorum Brower

26 APR 2023

Technical Manager or designee, ATCC Federal Solutions

ATCC®, on behalf of BEI Resources, hereby represents and warrants that the material provided under this certificate has been subjected to the tests and procedures specified and that the results described, along with any other data provided in this certificate, are true and accurate to the best of ATCC®'s knowledge.

ATCC® is a trademark of the American Type Culture Collection.

You are authorized to use this product for research use only. It is not intended for human use.

