

**Prevotella amnii, Strain CRIS 21A-A**

**Catalog No. HM-138**

**Product Description:**

*Prevotella amnii* (*P. amnii*) strain CRIS 21A-A, was isolated from human amniotic fluid. HM-138 was produced by the inoculation of BEI Resources seed lot 59979682 into Modified Chopped Meat medium and Tryptic Soy agar with 5% defibrinated sheep blood plate. Both were grown at 37°C in an anaerobic atmosphere (< 5% O<sub>2</sub>; Remel™ Pack-Anaero™) for 3 days. Colonies from the plate were scraped into the Modified Chopped Meat medium growth, and the growth mixture was added to Tryptic Soy agar with 5% defibrinated sheep blood kolles, which were grown for 4 days at 37°C in an anaerobic atmosphere to produce this lot.

**Note:** Quality control of HMP material is only performed to demonstrate that the material distributed by BEI Resources is identical to the deposited material. It should not be considered a complete characterization of the deposited organism.

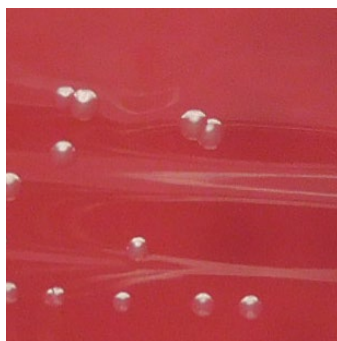
**Lot: 70059694**

**Manufacturing Date: 04APR2023**

TEST	SPECIFICATIONS	RESULTS
<b>Phenotypic Analysis</b> Cellular morphology Colony morphology 2 days at 37°C in an anaerobic atmosphere on Tryptic Soy agar with 5% defibrinated sheep blood Motility (wet mount)	Gram-negative rods Report results  Report results	Gram-negative rods Circular, convex, entire, smooth and cream (Figure 1)  Non-motile
<b>Genotypic Analysis</b> Sequencing of 16S ribosomal RNA gene (~ 980 base pairs)	≥ 99% sequence identity to <i>P. amnii</i> strain CRIS 21A-A (GenBank: ADFQ01000002.1)	99.9% sequence identity to <i>P. amnii</i> strain CRIS 21A-A (GenBank: ADFQ01000002.1) <sup>1</sup>
<b>Purity (post-freeze)</b> Anaerobic 7 days at 37°C on Tryptic Soy agar with 5% defibrinated sheep blood Aerobic with 5% CO <sub>2</sub> 7 days at 37°C on Tryptic Soy agar with 5% defibrinated sheep blood	Growth consistent with expected colony morphology  No growth	Growth consistent with expected colony morphology  No growth
<b>Viability (post-freeze)</b> 2 days at 37°C in an anaerobic atmosphere on Tryptic Soy agar with 5% defibrinated sheep blood	Growth	Growth

<sup>1</sup>Also consistent with other *Prevotella* species

**Figure 1: Colony Morphology**



/Sonia Bjorum Brower/

Sonia Bjorum Brower

27 JUN 2023

Technical Manager or designee, ATCC Federal Solutions

ATCC®, on behalf of BEI Resources, hereby represents and warrants that the material provided under this certificate has been subjected to the tests and procedures specified and that the results described, along with any other data provided in this certificate, are true and accurate to the best of ATCC®'s knowledge.

ATCC® is a trademark of the American Type Culture Collection.

You are authorized to use this product for research use only. It is not intended for human use.

