

***Streptococcus pyogenes*, Strain MGAS1882**

Catalog No. NR-33708

Product Description:

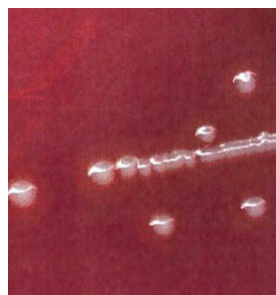
Streptococcus pyogenes (*S. pyogenes*), strain MGAS1882 is a historic strain isolated in the 1970s from a human case of post-streptococcal glomerulonephritis in the United States. NR-33708 lot 70056672 was produced by inoculation of BEI Resources seed lot 61600071) into Tryptic Soy broth and grown for 1 day at 37°C in an ambient atmosphere. Broth inoculum was added to Tryptic Soy agar with 5% defibrinated sheep blood kolles, which were grown for 1 day at 37°C in an ambient atmosphere to produce this lot. Quality control testing was completed under propagation conditions unless otherwise noted.

Lot: 70056672

Manufacturing Date: 02DEC2022

TEST	SPECIFICATIONS	RESULTS
Phenotypic Analysis Cellular morphology Colony morphology Hemolysis 1 day at 37°C in an aerobic atmosphere on Tryptic Soy agar with 5% defibrinated sheep blood Motility Hardy Diagnostics™ Motility Test Medium with TTC Indicator for 1 day at 37°C in an aerobic atmosphere Biochemical tests Catalase VITEK® MS (MALDI-TOF)	Gram-positive cocci Report results Report results Report results Negative <i>S. pyogenes</i>	Gram-positive cocci Circular, raised, entire, smooth and white (Figure 1) β-hemolytic Non-motile Negative <i>S. pyogenes</i> (99.9%)
Genotypic Analysis Sequencing of 16S ribosomal RNA gene (~ 1480 base pairs)	≥ 99% sequence identity to <i>S. pyogenes</i> , strain MGAS1882 (GenBank: CP003121.1)	99.9% sequence identity to <i>S. pyogenes</i> , strain MGAS1882 (GenBank: CP003121.1)
Purity 7 days at 37°C in an aerobic atmosphere with and without 5% CO ₂ on Tryptic Soy agar with 5% defibrinated sheep blood	Growth consistent with expected colony morphology	Growth consistent with expected colony morphology
Viability	Growth	Growth

Figure 1: Colony Morphology



/Sonia Bjorum Brower/

Sonia Bjorum Brower

05 JUL 2023

Technical Manager or designee, ATCC Federal Solutions

ATCC®, on behalf of BEI Resources, hereby represents and warrants that the material provided under this certificate has been subjected to the tests and procedures specified and that the results described, along with any other data provided in this certificate, are true and accurate to the best of ATCC®'s knowledge.

ATCC® is a trademark of the American Type Culture Collection.

You are authorized to use this product for research use only. It is not intended for human use.

