

Staphylococcus epidermidis, Strain VCU036

Catalog No. NR-46379

Product Description:

Staphylococcus epidermidis (*S. epidermidis*), strain VCU036 is of unknown origin. *S. epidermidis*, strain VCU036 was deposited to BEI Resources as part of the NARSA collection. NR-46379 was produced by inoculation of the BEI Resources seed lot 63652475 into Tryptic Soy broth and grown for 1 day at 37°C in an aerobic atmosphere. Broth inoculum was added to Tryptic Soy agar with 5% defibrinated sheep blood kolles, which were grown for 1 day at 37°C in an aerobic atmosphere to produce this lot. Quality control testing was completed under propagation conditions unless otherwise noted.

Lot: 70056121

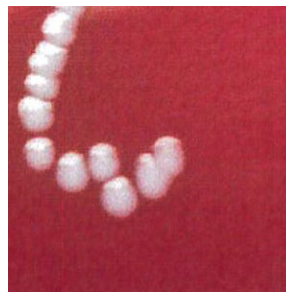
Manufacturing Date: 12OCT2022

BEI Resources is committed to ensuring digital accessibility for people with disabilities. This Certificate of Analysis contains complex tables and may not be fully accessible. Please let us know if you encounter accessibility barriers and a fully accessible document will be provided: E-mail: Contact@BEIResources.org. We try to respond to feedback within 24 hours.

TEST	SPECIFICATIONS	RESULTS
Phenotypic Analysis Cellular morphology Colony morphology Motility (wet mount) Hemolysis 1 day at 37°C in an aerobic atmosphere on Tryptic Soy agar with 5% defibrinated sheep blood Biochemical characterization Catalase Coagulase ¹ VITEK® 2 Compact (GP card)	Gram-positive cocci Report results Report results Report results Positive Report results <i>S. epidermidis</i> (≥ 89.9%)	Gram-positive cocci Circular, convex, entire, smooth and gray (Figure 1) Non-motile Non-hemolytic Positive Negative <i>S. epidermidis</i> (98%)
Genotypic Analysis Sequencing of 16S ribosomal RNA gene (~ 1500 base pairs)	≥ 99% identity to <i>S. epidermidis</i> , strain VCU036 (GenBank: JHUA01000035)	99.8% identity to <i>S. epidermidis</i> , strain VCU036 (GenBank: JHUA01000035)
Purity (post-freeze) 7 days at 37°C in an aerobic atmosphere with and without 5% CO ₂ on Tryptic Soy agar with 5% defibrinated sheep blood	Growth consistent with expected colony morphology	Growth consistent with expected colony morphology
Viability (post-freeze)	Growth	Growth

¹4 hours at 37°C in rabbit serum with 0.15% EDTA (Coagulase Plasma BBL™ 240827)

Figure 1: Colony Morphology



/Sonia Bjorum Brower/

Sonia Bjorum Brower

26 JUL 2023

Technical Manager or designee, ATCC Federal Solutions

ATCC®, on behalf of BEI Resources, hereby represents and warrants that the material provided under this certificate has been subjected by ATCC® to the tests and procedures specified and that the results described, along with any other data provided in this certificate, are true and accurate to the best of ATCC®'s knowledge.

ATCC® is a trademark of the American Type Culture Collection.

You are authorized to use this product for research use only. It is not intended for human use.

