

Staphylococcus aureus, Strain S0385 (MRSA)

Catalog No. NR-28983

Product Description:

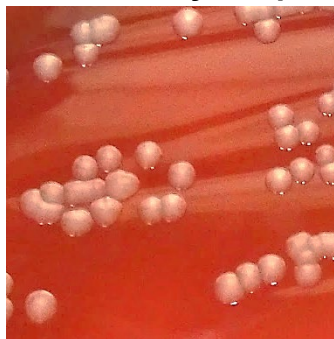
Staphylococcus aureus (*S. aureus*), strain S0385 was isolated in 2006 in the Netherlands from a blood sample of a 63-year-old female patient with endocarditis who had a history of renal transplantation and immunosuppressive therapy. NR-28983 was produced by the inoculation of BEI Resources seed lot 63447977 into Tryptic Soy broth and incubated for 1 day at 37°C in an aerobic atmosphere. Broth inoculum was added to Tryptic Soy agar with 5% defibrinated sheep blood kolles, which were grown for 1 day at 37°C in an aerobic atmosphere to produce this lot. Quality control testing was completed under propagation conditions unless otherwise noted.

Lot: 70059461

Manufacturing Date: 22MAR2023

TEST	SPECIFICATIONS	RESULTS
Phenotypic Analysis Cellular morphology Colony morphology Motility (wet mount) Hemolysis Biochemical characterization Catalase VITEK® 2 Compact (GP card)	Gram-positive cocci Report results Report results β-hemolytic Positive Consistent with <i>S. aureus</i>	Gram-positive cocci Circular, convex, entire, smooth and cream (Figure 1) Non-motile β-hemolytic Positive Consistent with <i>S. aureus</i>
Antibiotic Susceptibility Profile Oxacillin resistance 1 day at 35°C in an aerobic atmosphere on Mueller Hinton agar containing 6 µg/mL oxacillin and 4% NaCl (Oxacillin Screen agar BD™ 676802)	Resistant	Resistant
Genotypic Analysis Sequencing of 16S ribosomal RNA gene (~ 1490 base pairs)	≥ 99% sequence identity to <i>S. aureus</i> type strain (GenBank: AM990992)	100% sequence identity to <i>S. aureus</i> type strain (GenBank: AM990992)
Purity (post-freeze) 7 days at 37°C in an aerobic atmosphere with and without 5% CO ₂ on Tryptic Soy agar with 5% defibrinated sheep blood	Growth consistent with expected colony morphology	Growth consistent with expected colony morphology
Viability (post-freeze)	Growth	Growth

Figure 1: Colony Morphology



/Sonia Bjorum Brower/

Sonia Bjorum Brower

13 JUL 2023

Technical Manager or designee, ATCC Federal Solutions

ATCC®, on behalf of BEI Resources, hereby represents and warrants that the material provided under this certificate has been subjected to the tests and procedures specified and that the results described, along with any other data provided in this certificate, are true and accurate to the best of ATCC®'s knowledge.

ATCC® is a trademark of the American Type Culture Collection.

You are authorized to use this product for research use only. It is not intended for human use.

