

Monoclonal Anti-Zika Virus Envelope (E) Protein, Clone ZV-2 (produced *in vitro*)

Catalog No. NR-50414

Product Description:

Antibody Class: IgG2c

Mouse monoclonal antibody prepared against the envelope (E) glycoprotein of Zika virus was purified from clone ZV-2 hybridoma supernatant by protein G affinity chromatography. The B cell hybridoma was generated by the fusion of P3X63Ag8.653 mouse myeloma cells with immunized mouse splenocytes. NR-50414 lot 70041555 was produced from BEI Resources lot 2242 adapted to serum-free media.

Lot: 70041555

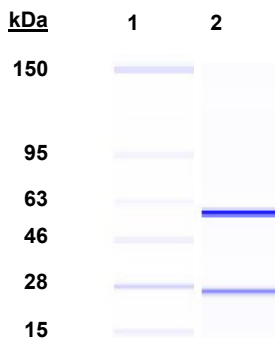
Manufacturing Date: 07MAR2021

TEST	SPECIFICATIONS	RESULTS
Antibody Class Determination	IgG2c	IgG2c ¹
Agilent® Protein 230 Analysis	Correct molecular weight (MW) for heavy and light chains; Report purity	Correct molecular weight (MW) for heavy and light chains (Figure 1); 99.5% pure
Identification by Western Blot Goat anti-mouse IgG2c ²	Reactive	Reactive (Figure 2)
Concentration by Spectrophotometer at OD ₂₈₀	~ 1 mg/mL	0.81 mg/mL
Sterility	0.22 µm filter-sterilized	0.22 µm filter-sterilized

¹Currently there is no isotyping kit available for the detection of mouse IgG2c. Hence, it was confirmed by western blot.

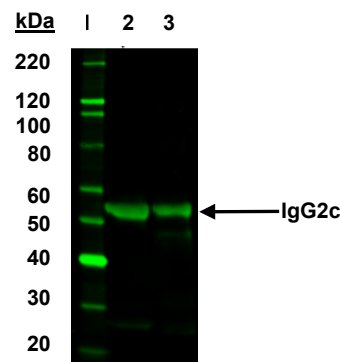
²Using a 1:1000 dilution of goat anti-mouse IgG2c as primary antibody (Bethyle Lab Catalog No. A-90-136A11) and a 1:10000 dilution of donkey anti-goat IgG2c IRDye® 800CW conjugate (LiCor® 925-32210) as secondary antibody

Figure 1: Agilent® Protein 230 Analysis



Lane 1: MW Markers (kDa)
Lane 2: NR-50414

Figure 2: Western Blot with Anti-Mouse IgG2c



Lane 1: MW Markers (kDa)
Lane 2: NR-50414 (3 µg)
Lane 3: Mouse IgG2c isotype control (3 µg)

/Sonia Bjorum Brower/

Sonia Bjorum Brower

18 MAY 2023

Technical Manager or designee, ATCC Federal Solutions

ATCC®, on behalf of BEI Resources, hereby represents and warrants that the material provided under this certificate has been subjected to the tests and procedures specified and that the results described, along with any other data provided in this certificate, are true and accurate to the best of ATCC®'s knowledge.

ATCC® is a trademark of the American Type Culture Collection.

You are authorized to use this product for research use only. It is not intended for human use.

