

**Macrophage Cell Line Derived from TLR3 Knockout Mice**

**Catalog No. NR-19974**

This reagent is the property of the U.S. Government.

**Product Description:**

The murine macrophage cell line was derived using primary bone marrow cells from TLR3 (Toll-like receptor) knockout mice. The primary bone marrow cells were immortalized by infection with the ecotropic transforming replication-deficient retrovirus J2 using techniques described in the literature.

**Lot: 70059820**

**Manufacturing Date: 03APR2023**

TEST	SPECIFICATIONS	RESULTS
<b>Growth Properties</b>	Adherent	Adherent
<b>Morphology</b>	Macrophage	Macrophage
<b>PCR Amplification of Extracted DNA (Figure 1)<sup>1</sup></b> TLR3 wild type primers TLR3 knockout primers	No amplicon Expected amplicon	No amplicon Expected amplicon
<b>Stimulation of RANTES<sup>1</sup></b>	Report results	See Figure 2
<b>Multiplex PCR Amplification of Cytochrome C Oxidase I (COI) Gene</b>	Murine origin No evidence of another species	Murine origin No evidence of another species
<b>Total Cell Count</b>	> 1.0 × 10 <sup>6</sup> cells/vial	5.1 × 10 <sup>6</sup> cells/vial
<b>Post-Freeze Viability</b>	≥ 50%	92.3%
<b>Sterility (21-day incubation)</b> Harpo's HTYE broth, 37°C and 26°C, aerobic <sup>2</sup> Trypticase Soy broth, 37°C and 26°C, aerobic Sabouraud broth, 37°C and 26°C, aerobic Sheep blood agar, 37°C, aerobic Sheep blood agar, 37°C, anaerobic Thioglycollate broth, 37°C, anaerobic DMEM with 10% FBS, 37°C and 5% CO <sub>2</sub>	No growth No growth No growth No growth No growth No growth No growth	No growth No growth No growth No growth No growth No growth No growth
<b>Mycoplasma Contamination</b> Hoechst DNA stain Agar and broth culture (14-day incubation at 37°C) DNA detection by PCR of extracted Test Article nucleic acid	None detected None detected None detected	None detected None detected None detected

<sup>1</sup>Depositor QC is NOT lot specific; same data as previous lots of NR-19974

<sup>2</sup>Atlas, Ronald M. *Handbook of Microbiological Media*. 3rd ed. Ed. Lawrence C. Parks. Boca Raton: CRC Press, 2004, p. 798.

/Sonia Bjorum Brower/

Sonia Bjorum Brower

Technical Manager, ATCC Federal Solutions

27 MAY 2023

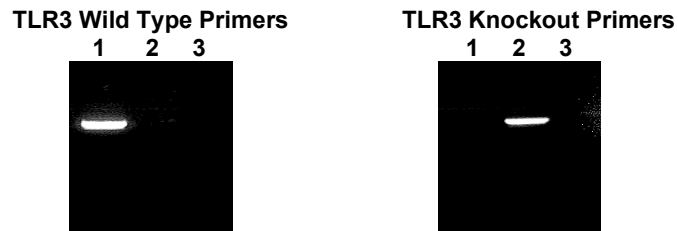
ATCC®, on behalf of BEI Resources, hereby represents and warrants that the material provided under this certificate has been subjected by ATCC® and the contributor to the tests and procedures specified and that the results described, along with any other data provided in this certificate, are true and accurate to the best of ATCC®'s knowledge.

ATCC® is a trademark of the American Type Culture Collection.

You are authorized to use this product for research use only. It is not intended for human use.



Figure 1 – PCR Amplification (Representative Data)



Lane 1: Wild type macrophages  
 Lane 2: TLR3 knockout macrophages (NR-19974)  
 Lane 3: Negative control (H<sub>2</sub>O)

Figure 2 – Stimulation of RANTES (Representative Data)

