

Genomic RNA from Enterovirus Species D Type 68, US/KY/14-18953

Catalog No. NR-49137

Product Description:

Genomic RNA was isolated from a preparation of cell lysate and supernatant from human rhabdomyosarcoma cells (RD; ATCC® CCL-136™) infected with enterovirus species D type 68 (EVD-68), US/KY/14-18953 (BEI Resources NR-49137 lot 70030315) using QIAamp® Viral RNA Mini Kit (Qiagen® 52906). The viral genomic RNA is in a background of cellular nucleic acid and carrier RNA.

Lot: 70059819

Manufacturing Date: 12APR2023

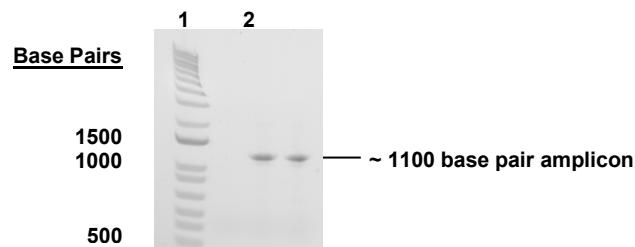
TEST	SPECIFICATIONS	RESULTS
Genotypic Analysis Sequencing of species-specific region (~ 890 nucleotides)	≥ 98% identity with EVD-68, US/KY/14-18953 (GenBank: KM851231)	99.6% identity with EVD-68, US/KY/14-18953 (GenBank: KM851231)
Functional Activity by RT-PCR Amplification¹ VP1 Capsid gene	~ 1100 base pair amplicon	~ 1100 base pair amplicon
Estimated Concentration (post-dilution) by Qubit® Measurement (Viral, Cellular and Carrier)²	Report results	13.7 ng per 100 µL (0.137 µg/mL)
Estimated Amount per Vial²	Report results	13.7 ng
Virus Inactivation 10% of total yield inoculated on RD cells and evaluated for cytopathic effect ³	No viable virus detected	No viable virus detected

¹Amplified using iTaq™ Universal SYBR Green One-step Kit (Bio-Rad® 172-5151) with 5 µL of NR-49137 in a 50 µL reaction

²Measurement is determined pre-vial prior to dilution due to the limit of detection of the quantification method

³Use of the QIAamp® Viral RNA Mini Kit has been demonstrated to consistently inactivate 100% of EVD-68 as shown by the absence of cytopathic effect (CPE) after plating the entire extract on virus-susceptible cells for two passages.

Figure 1: Functional Activity of NR-49137 by RT-PCR Amplification of VP1 Capsid Gene



Lane 1: Invitrogen™ TrackIt™ 1 Kb Plus DNA Ladder
Lane 2: PCR product from 1 µL of NR-49137

/Sonia Bjorum Brower/
Sonia Bjorum Brower

28MAY2023

Technical Manager or designee, ATCC Federal Solutions

ATCC®, on behalf of BEI Resources, hereby represents and warrants that the material provided under this certificate has been subjected to the tests and procedures specified and that the results described, along with any other data provided in this certificate, are true and accurate to the best of ATCC®'s knowledge.

ATCC® is a trademark of the American Type Culture Collection.

You are authorized to use this product for research use only. It is not intended for human use.

