

Genomic DNA from *Enterococcus faecium*, Strain TX1330

Catalog No. HM-204D

Product Description:

Genomic DNA was extracted from a preparation of *Enterococcus faecium* (*E. faecium*), strain TX1330 (also referred to as strain SE34). The bacterial preparation used for extraction of genomic DNA was produced by culture of BEI Resources seed lot 0002006. Genomic DNA was extracted using proprietary technology and is provided in TE buffer (10 mM Tris-HCl, 1 mM EDTA, pH ~ 8.0).

Note: Quality control of HMP organisms used for DNA extraction is only performed to demonstrate that the material produced by BEI Resources is identical to the deposited material. It should not be considered a complete characterization of the deposited organism.

Lot: 70050385

Manufacturing Date: 23JUN2022

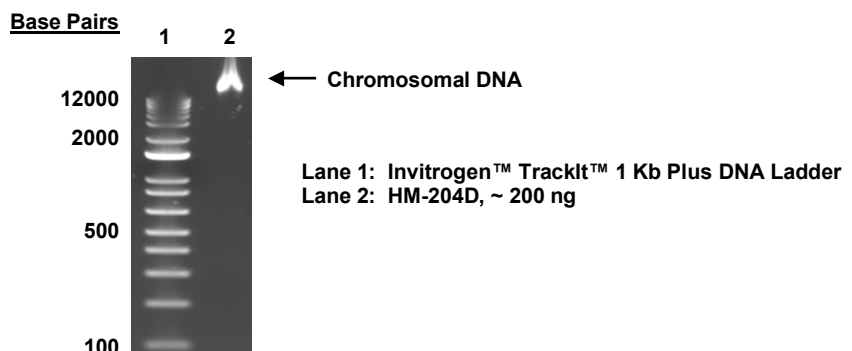
TEST	SPECIFICATIONS	RESULTS
Genotypic Analysis Sequencing of 16S ribosomal RNA gene (~ 1490 base pairs)	≥ 99% sequence identity to <i>E. faecium</i> , strain TX1330 (GenBank: ACHL01000045)	99.9% sequence identity to <i>E. faecium</i> , strain TX1330 (GenBank: ACHL01000045) ¹
Agarose Gel Electrophoresis	High molecular weight chromosomal DNA	High molecular weight chromosomal DNA (Figure 1)
Concentration by PicoGreen® Measurement	0.7 to 1.5 µg in 25 to 100 µL per vial	0.9 µg in 35 µL per vial (26 µg/mL)
Amount per Vial	0.7 to 1.5 µg	0.9 µg
Functional Activity by PCR Amplification 16S ribosomal RNA gene	~ 1500 base pair amplicon	~ 1500 base pair amplicon
OD₂₆₀/OD₂₈₀ Ratio	1.7 to 2.1	1.8
Bacterial Inactivation 10% of total yield plated on agar for 14	No viable bacteria detected	No viable bacteria detected

¹Also consistent with other *Enterococcus* species

²14 days at 37°C in an aerobic atmosphere on Brain Heart Infusion agar.

³An extraction procedure was used that has been shown to consistently inactivate 100% of Gram-negative and Gram-positive bacteria.

Figure 1: Agarose Gel Electrophoresis



/Sonia Bjorum Brower/

Sonia Bjorum Brower

07 AUG 2023

Technical Manager or designee, ATCC Federal Solutions

ATCC®, on behalf of BEI Resources, hereby represents and warrants that the material provided under this certificate has been subjected to the tests and procedures specified and that the results described, along with any other data provided in this certificate, are true and accurate to the best of ATCC®'s knowledge.

ATCC® is a trademark of the American Type Culture Collection.

You are authorized to use this product for research use only. It is not intended for human use.

