

***Streptococcus pyogenes*, Strain ABC020063118**

**Catalog No. NR-48702**

This reagent is the tangible property of the U.S. Government.

**Product Description:**

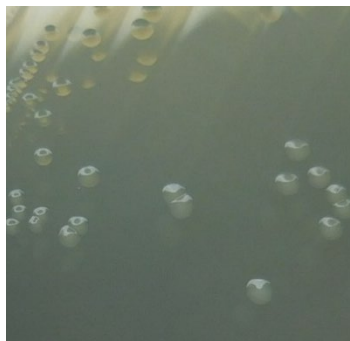
*Streptococcus pyogenes* (*S. pyogenes*), strain ABC020063118 was isolated between 2010 and 2012 from the blood of a human with bacteremia, streptococcal toxic shock syndrome or necrotizing fasciitis in the USA. *S. pyogenes*, strain ABC020063118 was deposited as a Group A *Streptococcus* (GAS) strain. NR-48702 was produced by inoculation of BEI Resources seed lot 70001692 into Tryptic Soy broth and grown for 1 day at 37°C in an aerobic atmosphere with 5% CO<sub>2</sub>. Broth inoculum was added to Tryptic Soy agar kolles, which were grown for 1 day at 37°C in an aerobic atmosphere with 5% CO<sub>2</sub> to produce this lot. Quality control testing was completed under propagation conditions unless otherwise noted.

**Lot: 70043152**

**Manufacturing Date: 31MAR2021**

TEST	SPECIFICATIONS	RESULTS
<b>Phenotypic Analysis</b> Cellular morphology Colony morphology  Motility (wet mount) Hemolysis 1 day at 37°C in an aerobic atmosphere with 5% CO <sub>2</sub> on Tryptic Soy agar with 5% defibrinated sheep blood  Catalase VITEK® MS (MALDI-TOF)	Gram-positive cocci Report results  Non-motile β-hemolytic  Negative Consistent with <i>S. pyogenes</i>	Gram-positive cocci Circular, convex, entire, smooth and cream (Figure 1) Non-motile β-hemolytic  Negative <i>S. pyogenes</i> (99.9%)
<b>Genotypic Analysis</b> Sequencing of 16S ribosomal RNA (rRNA) gene (~ 1440 base pairs)	≥ 99% sequence identity to <i>S. pyogenes</i> type strain (GenBank: ATXR01000029.1)	100% sequence identity to <i>S. pyogenes</i> type strain (GenBank: ATXR01000029.1)
<b>Purity</b> 7 days at 37°C in an aerobic atmosphere with 5% CO <sub>2</sub> on Tryptic Soy agar	Growth consistent with expected colony morphology	Growth consistent with expected colony morphology
<b>Viability</b>	Growth	Growth

**Figure 1: Colony Morphology**



/Heather Couch/

Heather Couch

11 OCT 2021

Program Manager or designee, ATCC Federal Solutions

ATCC®, on behalf of BEI Resources, hereby represents and warrants that the material provided under this certificate has been subjected to the tests and procedures specified and that the results described, along with any other data provided in this certificate, are true and accurate to the best of ATCC®'s knowledge.

ATCC® is a trademark of the American Type Culture Collection.

You are authorized to use this product for research use only. It is not intended for human use.

