

***Acinetobacter baumannii*, Strain MRSN 1551**

Catalog No. NR-52159

This reagent is the tangible property of the U.S. Government.

Product Description:

Acinetobacter baumannii (A. baumannii), strain MRSN 1551 was isolated in 2010 from a human specimen in the USA as part of a global surveillance program. A. baumannii, strain MRSN 1551 was deposited as multi-locus sequence type (MLST) ST 10, sensitive to amikacin, ceftazidime, colistin, cefepime, imipenem, levofloxacin, meropenem, ampicillin/sulbactam and tobramycin, resistant to ciprofloxacin, trimethoprim/sulfamethoxazole and tetracycline and intermediately resistant to ceftriaxone and gentamicin. NR-52159 lot 70056947 was produced by inoculation of BEI Resources seed lot 70040777 into Tryptic Soy broth and grown for 1 day at 37°C in an aerobic atmosphere. Broth inoculum was added to Tryptic Soy agar kolles, which were grown for 1 day at 37°C in an aerobic atmosphere to produce this lot. Quality control testing was completed under propagation conditions unless otherwise noted.

Lot: 70056947

Manufacturing Date: 30NOV2022

BEI Resources is committed to ensuring digital accessibility for people with disabilities. This Certificate of Analysis contains complex tables and may not be fully accessible. Please let us know if you encounter accessibility barriers and a fully accessible document will be provided:
E-mail: Contact@BEIResources.org. We try to respond to feedback within 24 hours.

TEST	SPECIFICATIONS	RESULTS
Phenotypic Analysis Cellular morphology Colony morphology Growth at 44°C ± 2°C ¹ 1 day in an aerobic atmosphere on Tryptic Soy agar Motility Hardy Diagnostics™ Motility Test Medium w/TTC Indicator for 1 day at 37°C in an aerobic atmosphere VITEK® MS (MALDI-TOF)	Gram-negative rods Report results Growth Report results <i>A. baumannii</i>	Gram-negative rods Circular, convex, entire, smooth, mucoid and cream (Figure 1) Growth Motile <i>A. baumannii</i> (99.9%)
Antibiotic Susceptibility Profile^{2,3} Amikacin Ampicillin/sulbactam Cefepime Ceftriaxone Ceftazidime Ciprofloxacin Gentamicin Imipenem Levofloxacin Meropenem Trimethoprim/sulfamethoxazole Tobramycin Tetracycline	Sensitive Sensitive Sensitive Intermediate Sensitive Intermediate Sensitive Sensitive Sensitive Sensitive Sensitive Resistant Sensitive Resistant	Sensitive (3 µg/mL) Sensitive (1 µg/mL) Sensitive (2 µg/mL) Intermediate (16 µg/mL) Sensitive (4 µg/mL) Sensitive (1 µg/mL) ⁴ Sensitive (1 µg/mL) ⁵ Sensitive (0.25 µg/mL) Sensitive (1 µg/mL) Sensitive (≤ 0.25 µg/mL) Resistant (160 µg/mL) Sensitive (≤ 1 µg/mL) Resistant (≥ 16 µg/mL)
Genotypic Analysis Sequencing of 16S ribosomal RNA gene (~ 1480 base pairs)	≥ 99% sequence identity to <i>A. baumannii</i> , strain MRSN 1551 (GenBank: VHGG01000056.1)	100% sequence identity to <i>A. baumannii</i> , strain MRSN 1551 (GenBank: VHGG01000056.1)
Purity 7 days at 37°C in an aerobic atmosphere with and without 5% CO ₂ on Tryptic Soy agar	Growth consistent with expected colony morphology	Growth consistent with expected colony morphology

Certificate of Analysis for NR-52159

TEST	SPECIFICATIONS	RESULTS
Viability	Growth	Growth

¹Growth at 44°C differentiates *A. baumannii* from *A. calcoaceticus* and *A. pittii*, which do not grow at 44°C.

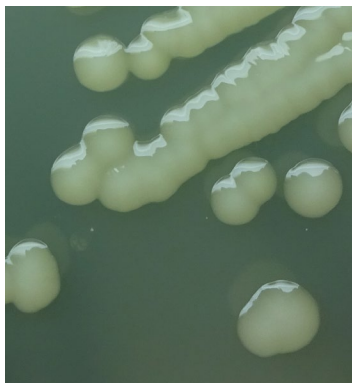
²Minimum Inhibitory Concentration (MIC); MIC Interpretation Guideline: CLSI M100-S28 (2018)

³Antibiotic susceptibility was tested using a combination of VITEK®2 GN81 and E-test strips.

⁴*A. baumannii*, strain MRSN 1551 was deposited as resistant to ciprofloxacin and was found to be intermediately resistant for lot 70040776 but showed a MIC of 1 µg/mL for the current lot (interpreted as sensitive) for ciprofloxacin during QC testing. Testing was performed in duplicate.

⁵*A. baumannii*, strain MRSN 1551 was deposited as being intermediately resistant to gentamicin but showed a MIC of 3 µg/mL (interpreted as sensitive) for lot 70040776 during QC testing. Testing was performed in duplicate.

Figure 1: Colony Morphology



/Sonia Bjorum Brower/

Sonia Bjorum Brower

Technical Manager or designee, ATCC Federal Solutions

09 OCT 2023

ATCC®, on behalf of BEI Resources, hereby represents and warrants that the material provided under this certificate has been subjected to the tests and procedures specified and that the results described, along with any other data provided in this certificate, are true and accurate to the best of ATCC®'s knowledge.

ATCC® is a trademark of the American Type Culture Collection.

You are authorized to use this product for research use only. It is not intended for human use.

