

Ruminococcus gnavus, Strain CC55_001C

Catalog No. HM-1056

Product Description:

Ruminococcus gnavus (*R. gnavus*), strain CC55_001C was isolated in October 2010 from colonic biopsy tissue of a human subject in Victoria, British Columbia, Canada. HM-1056 was produced by inoculation of BEI Resources seed lot 63025343 into Rumen Fluid-Glucose-Cellobiose broth and grown for 3 days at 37°C in an anaerobic atmosphere. Broth inoculum was added to Rumen Fluid-Glucose-Cellobiose broth, which was grown for 3 days at 37°C in an anaerobic atmosphere to produce this lot.

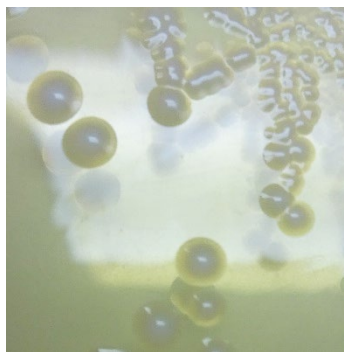
Note: Quality control of HMP material is only performed to demonstrate that the material distributed by BEI Resources is identical to the deposited material. It should not be considered a complete characterization of the deposited organism.

Lot: 70061680

Manufacturing Date: 27JUL2023

TEST	SPECIFICATIONS	RESULTS
Phenotypic Analysis Cellular morphology Colony morphology 3 days at 37°C in an anaerobic atmosphere on Rumen Fluid-Glucose-Cellobiose agar Motility (wet mount)	Gram-positive coccobacillus Report results Report results	Gram-positive coccobacillus Circular, convex, entire, translucent, smooth and cream (Figure 1) Non-motile
Genotypic Analysis Sequencing of 16S ribosomal RNA gene (~ 1440 base pairs)	≥ 99% identical to <i>R. gnavus</i> , strain CC55_001C (GenBank: AZJF01000012.1)	99.8% identical to <i>R. gnavus</i> , strain CC55_001C (GenBank: AZJF01000012.1)
Purity (post-freeze) Anaerobic 7 days at 37°C on Tryptic Soy agar with 5% defibrinated sheep blood Aerobic with 5% CO ₂ 7 days at 37°C on Tryptic Soy agar with 5% defibrinated sheep blood	Growth consistent with expected colony morphology Report results	Growth consistent with expected colony morphology No growth
Viability (post-freeze) 3 days at 37°C in an anaerobic atmosphere on Rumen Fluid-Glucose-Cellobiose agar	Growth	Growth

Figure 1: Colony Morphology



/Sonia Bjorum Brower/

Sonia Bjorum Brower

10 OCT 2023

Technical Manager or designee, ATCC Federal Solutions

ATCC®, on behalf of BEI Resources, hereby represents and warrants that the material provided under this certificate has been subjected to the tests and procedures specified and that the results described, along with any other data provided in this certificate, are true and accurate to the best of ATCC®'s knowledge.

ATCC® is a trademark of the American Type Culture Collection.

You are authorized to use this product for research use only. It is not intended for human use.

