

Escherichia coli, Strain 83972

Catalog No. HM-50

Product Description:

Escherichia coli (*E. coli*), strain 83972 was isolated from the urine of a young girl with a three-year history of asymptomatic bacteriuria (ABU) with stable renal function in Gothenburg, Sweden. HM-50 was produced by the inoculation of BEI Resources seed lot 60110262 into Tryptic Soy broth and grown for 1 day at 37°C in an aerobic atmosphere. Broth inoculum was added to Tryptic Soy agar kolles, which were grown for 1 day at 37°C in an aerobic atmosphere to produce this lot. Quality control testing was completed under propagation conditions unless otherwise noted.

Note: Quality control of HMP material is only performed to demonstrate that the material distributed by BEI Resources is identical to the deposited material. It should not be considered a complete characterization of the deposited organism.

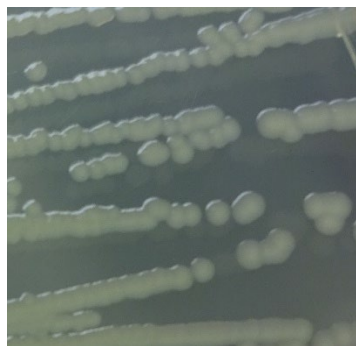
Lot: 70057700

Manufacturing Date: 05JAN2023

TEST	SPECIFICATIONS	RESULTS
Phenotypic Analysis Cellular morphology Colony morphology 1 day at 37°C in an aerobic atmosphere on Tryptic Soy agar Motility (wet mount)	Gram-negative rods Report results Report results	Gram-negative rods Circular, low convex, entire, smooth and cream (Figure 1) Motile
Genotypic Analysis Sequencing of 16S ribosomal RNA gene (~ 1470 base pairs)	≥ 99% sequence identity to <i>E. coli</i> , Strain 83972 (GenBank: CP001671.1)	99.8% sequence identity to <i>E. coli</i> , Strain 83972 (GenBank: CP001671.1) ¹
Purity (post-freeze) 7 days at 37°C in an aerobic atmosphere with 5% CO ₂ on Tryptic Soy agar	Growth consistent with expected colony morphology	Growth consistent with expected colony morphology
Viability (post-freeze) 1 day at 37°C in an aerobic atmosphere on Tryptic Soy agar	Growth	Growth

¹Also consistent with other *Enterobacter*, *Escherichia* and *Shigella* species

Figure 1: Colony Morphology



/Sonia Bjorum Brower/

Sonia Bjorum Brower

21 AUG 2023

Technical Manager or designee, ATCC Federal Solutions

ATCC®, on behalf of BEI Resources, hereby represents and warrants that the material provided under this certificate has been subjected to the tests and procedures specified and that the results described, along with any other data provided in this certificate, are true and accurate to the best of ATCC®'s knowledge.

ATCC® is a trademark of the American Type Culture Collection.

You are authorized to use this product for research use only. It is not intended for human use.

