

Escherichia coli K-12, Strain IM01B

Catalog No. NR-49805

Product Description:

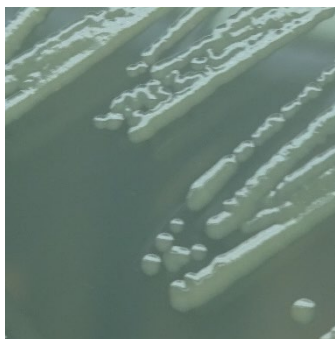
Escherichia coli (*E. coli*) K-12, strain IM01B contains the *hsdM* (methylase) and *hsdS* (specificity) genes from *Staphylococcus aureus* MW2 clonal complex 1 (CC1). This insertion mutant was produced in *E. coli* K-12, strain DC10B (Δdcm). *E. coli* K-12, strain IM01B was deposited as resistant to streptomycin. NR-49805 lot 70056671 was produced by the inoculation of BEI Resources seed lot 63849800 into Tryptic Soy broth containing 25 µg/mL streptomycin and incubated for 1 day at 37°C in an aerobic atmosphere. Broth inoculum was added to Tryptic Soy agar containing 25 µg/mL streptomycin kolles, which were grown for 1 day at 37°C in an aerobic atmosphere to produce this lot. Quality control testing was completed under propagation conditions unless otherwise noted.

Lot: 70056671

Manufacturing Date: 18NOV2022

TEST	SPECIFICATIONS	RESULTS
Phenotypic Analysis Cellular morphology Colony morphology Motility (wet mount)	Gram-negative rods Report results Report results	Gram-negative rods Circular, convex, entire, smooth and cream (Figure 1) Motile
VITEK® MS (MALDI-TOF)	<i>Escherichia coli</i>	<i>Escherichia coli</i> (99.9%)
Genotypic Analysis Sequencing of 16S ribosomal RNA gene (~ 1480 base pairs)	≥ 99% sequence identity to <i>E. coli</i> K-12 strain (GenBank: NZ_CP014225.1)	99.7% sequence identity to <i>E. coli</i> K-12 strain (GenBank: NZ_CP014225.1)
Confirmation of Streptomycin Resistance	Growth	Growth
Purity 7 days at 37°C in an aerobic atmosphere with and without 5% CO ₂ on Tryptic Soy agar with 5% defibrinated sheep blood	Consistent with expected colony morphology	Consistent with expected colony morphology
Viability	Growth	Growth

Figure 1: Colony Morphology



/Sonia Bjorum Brower/

Sonia Bjorum Brower

03 MAY 2023

Technical Manager or designee, ATCC Federal Solutions

ATCC®, on behalf of BEI Resources, hereby represents and warrants that the material provided under this certificate has been subjected to the tests and procedures specified and that the results described, along with any other data provided in this certificate, are true and accurate to the best of ATCC®'s knowledge.

ATCC® is a trademark of the American Type Culture Collection.

You are authorized to use this product for research use only. It is not intended for human use.

