

***Clostridioides difficile*, Isolate 6**

**Catalog No. NR-13432**

**Product Description:**

*Clostridioides difficile* (*C. difficile*), isolate 6 was isolated from a human patient from the Mid-Atlantic region of the United States in 2008/2009. NR-13432 was produced by inoculation of BEI Resources seed lot 59147470 into Modified Reinforced Clostridial broth and incubated for 3 days at 37°C in an anaerobic atmosphere (< 5% O<sub>2</sub>; Remel™ Pack-Anaero™). The material from the initial growth was passaged once in Modified Reinforced Clostridial broth for 2 days at 37°C in an anaerobic atmosphere to produce this lot.

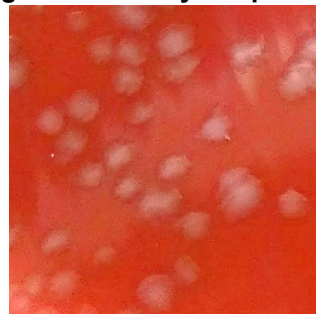
**Lot: 70061801**

**Manufacturing Date: 12JUL2023**

TEST	SPECIFICATIONS	RESULTS
<b>Phenotypic Analysis</b> Cellular morphology Colony morphology 3 days at 37°C in an anaerobic atmosphere on Tryptic Soy agar with 5% defibrinated sheep blood Motility (wet mount) Hemolysis 3 days at 37°C in an anaerobic atmosphere on Tryptic Soy agar with 5% defibrinated sheep blood VITEK® MS (MALDI-TOF) Biochemical Characterization Esculin hydrolysis <sup>1</sup> Gelatin hydrolysis <sup>1</sup>	Gram-positive rods Report results  Report results  Report results  <i>C. difficile</i>  Positive Positive	Gram-positive rods Irregular, flat, undulate, opaque and gray (Figure 1)  Non-motile  Non-hemolytic  <i>C. difficile</i> (99.9%)  Positive Positive
<b>Genotypic Analysis</b> Sequencing of 16S ribosomal RNA gene (~ 1420 base pairs)	≥ 99% sequence identity to <i>C. difficile</i> type strain (GenBank: MUJVV01000001.1)	99.9% sequence identity to <i>C. difficile</i> type strain (GenBank: MUJVV01000001.1)
<b>Purity (post-freeze)</b> Anaerobic 7 days at 37°C on Tryptic Soy agar with 5% defibrinated sheep blood Aerobic with 5% CO <sub>2</sub> 7 days at 37°C on Tryptic Soy agar with 5% defibrinated sheep blood	Report results  Report results	Growth consistent with expected colony morphology  No growth
<b>Viability (post-freeze)</b> 3 days at 37°C in an anaerobic atmosphere on Tryptic Soy agar with 5% defibrinated sheep blood	Growth	Growth

<sup>1</sup>Tests were assessed after 7 days at 37°C in an anaerobic atmosphere.

**Figure 1: Colony Morphology**



/Sonia Bjorum Brower/

Sonia Bjorum Brower

25 OCT 2023

Technical Manager or designee, ATCC Federal Solutions

ATCC®, on behalf of BEI Resources, hereby represents and warrants that the material provided under this certificate has been subjected to the tests and procedures specified and that the results described, along with any other data provided in this certificate, are true and accurate to the best of ATCC®'s knowledge.

ATCC® is a trademark of the American Type Culture Collection.

You are authorized to use this product for research use only. It is not intended for human use.

