

Mycobacterium tuberculosis*, Strain HN878, Whole Cell Lysate*Catalog No. NR-14824**

This reagent is the tangible property of the U.S. Government.

Product Description:

NR-14824 is a preparation of the whole cell lysate from *Mycobacterium tuberculosis*, strain HN878 and contains proteins, lipids and carbohydrates present within the bacterial cell.

Lot: 70053415**Manufacturing Date: 11MAR2023**

Production and QC testing were performed by Colorado State University (CSU). The CSU documentation for lot 14.HN878.11.11.11.WCL is attached.

ATCC®, on behalf of BEI Resources, hereby represents and warrants that the material provided under this certificate has been subjected by the contractor to the tests and procedures specified and that the results described, along with any other data provided in this certificate, are true and accurate to the best of ATCC®'s knowledge.

ATCC® is a trademark of the American Type Culture Collection.

You are authorized to use this product for research use only. It is not intended for human use.



WORK SHEET FOR WHOLE CELL LYSATE

General Information

BEI Catalog Number: NR-14824
CSU Lot Number: 14.HN878.11.11.11.WCL
Species: Mycobacterium tuberculosis
Strain: HN878

Sonication and Fractionation Information

Starting Material (lot#): 14.HN878.11.11.11.Wcg.b Cells Irradiated: Yes
Viability Test Performed: No Viable Organism Detected Cell Amount (wet weight): 70.4 g
SOP#: PP007.4
Notebook; Page(s): Rebecca Staudenmaier Notebook #2 Page 18

Date of French Press Sonication: 2/7/2023 Buffer Used: PBS-EDTA with protease inhibitor
Centrifugation Notes: 3000 x g for 15 minutes at 4°C
10mM ammonium bicarbonate dialysis Date started: 3/10/2023 Date Completed: 3/11/2023

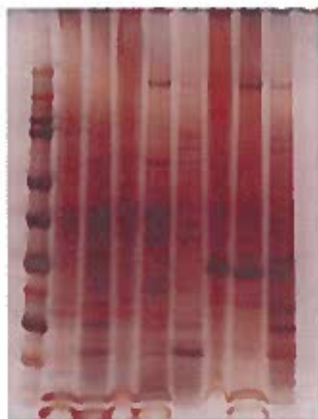
Notebook; Page(s): Rebecca Staudenmaier NB #2 Pages 18-25; Megan Stookey NB #2 pgs. 58-59 (French Press)
Notes: The original cell pellet was lysed. 1/4 of lysate was used for cell wall product. The remainder was used for whole cell lysate product.

Quality Control Information

BCA: 7.408 µg/µl Notebook and page(s): RS Notebook #2 Pages 19-22
Total Protein: 1070 mg
Silver Stain Date: 3/16/2023 Notebook and page(s): RS Notebook #2 Page 25

QC Gel: 5 µg

1 2 3 4 5 6 7 8 9



Lane 1 = Ladder
Lane 3 = WCL

Aliquot Information:

*Aliquot information reflects aliquots made at the time of QC. Bulk aliquots will be broken down as needed.

50 vials x 10 mg/ml to BEI

57 vials x 10mg/ml in bulk

RAS Staudenmaier 4/14/23
(Research Associate) (date)

[Signature] 4/14/2023
(Laboratory Supervisor) (date)