

***Klebsiella pneumoniae*, Strain BIDMC 11**

**Catalog No. NR-41927**

**Product Description:**

*Klebsiella pneumoniae* (*K. pneumoniae*), strain BIDMC 11 was isolated in 2008 from a peritoneal abscess in Boston, Massachusetts, USA. NR-41927 was produced by inoculation of BEI Resources seed lot 62907105 into Tryptic Soy broth and grown for 1 day at 37°C in an aerobic atmosphere. Broth inoculum was added to Tryptic Soy agar with 5% defibrinated sheep blood kolles, which were grown for 1 day at 37°C in an aerobic atmosphere to produce this lot.

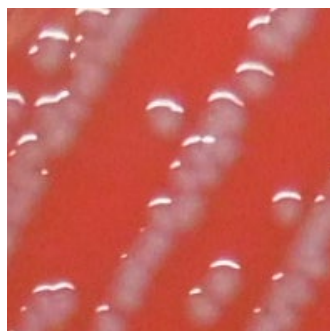
**Lot: 70063254**

**Manufacturing Date: 13SEP2023**

BEI Resources is committed to ensuring digital accessibility for people with disabilities. This Certificate of Analysis contains complex tables and may not be fully accessible. Please let us know if you encounter accessibility barriers and a fully accessible document will be provided:  
E-mail: [Contact@BEIResources.org](mailto:Contact@BEIResources.org). We try to respond to feedback within 24 hours.

TEST	SPECIFICATIONS	RESULTS
<b>Phenotypic Analysis</b> Cellular morphology Colony morphology  Motility (wet mount) VITEK® 2 MS (MALDI-TOF)	Gram-negative rods Report results  Report results <i>K. pneumoniae</i>	Gram-negative rods Circular, convex, entire, smooth and gray (Figure 1)  Non-motile <i>K. pneumoniae</i> (99%)
<b>Genotypic Analysis</b> Sequencing of 16S ribosomal RNA gene (~ 1410 base pairs)	≥ 99% sequence identity to <i>K. pneumoniae</i> , strain BIDMC 11 (GenBank: JCNF01000010.1)	99.9% sequence identity to <i>K. pneumoniae</i> , strain BIDMC 11 (GenBank: JCNF01000010.1)
<b>Purity (post-freeze)</b> 7 days at 37°C in an aerobic atmosphere with and without 5% CO <sub>2</sub> on Tryptic Soy agar with 5% defibrinated sheep blood	Growth consistent with expected colony morphology	Growth consistent with expected colony morphology
<b>Viability (post-freeze)</b>	Growth	Growth

**Figure 1: Colony Morphology**



/Sonia Bjorum Brower/

Sonia Bjorum Brower

06 DEC 2023

Technical Manager or designee, ATCC Federal Solutions

ATCC®, on behalf of BEI Resources, hereby represents and warrants that the material provided under this certificate has been subjected to the tests and procedures specified and that the results described, along with any other data provided in this certificate, are true and accurate to the best of ATCC®'s knowledge.

ATCC® is a trademark of the American Type Culture Collection.

You are authorized to use this product for research use only. It is not intended for human use.

