

**LpqH, Recombinant Protein Reference Standard**

**Catalog No. NR-50757**

This reagent is the tangible property of the U.S. Government.

**Product Description:**

NR-50757 is a recombinant form of the conserved 19 kDa lipoprotein antigen precursor, LpqH, from *Mycobacterium tuberculosis*. The recombinant protein consists of the native protein sequence in addition to a hexa-histidine tag. The recombinant protein was expressed in *Escherichia coli* BL21 (DE3) pLysS cells transformed with BEI Resources NR-13302 lot 59415500 and purified by immobilized-metal affinity chromatography.

**Lot: 70061622**

**Manufacturing Date: 15SEP2023**

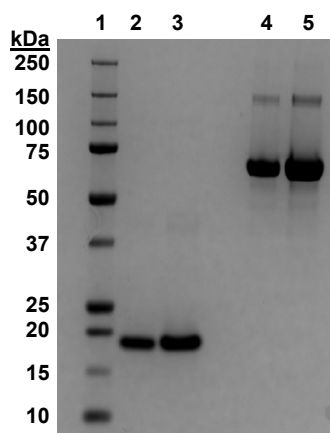
TEST	SPECIFICATIONS	RESULTS
<b>Appearance</b>	Report results	Clear and colorless; no particulate matter
<b>SDS-PAGE Analysis</b>	Dominant band ~ 19 kDa > 90% pure	Dominant band of ~ 19 kDa accounts for > 95% of total staining intensity (Figure 1)
<b>Concentration by Bicinchoninic Acid Protein Assay<sup>1</sup></b>	Report results	583 µg/µL
<b>Final Product</b> Quantity per vial Volume per vial	Report results Report results	466 µg 800 µL
<b>Identification by Western Blot Analysis</b> Monoclonal anti-histidine tag <sup>2</sup>	Reactive	Reactive (Figure 2)
<b>Endotoxin Content</b> Limulus Amoebocyte Lysate Assay <sup>3</sup>	Report results	31.4 EU/mg
<b>Sterility</b>	0.2 µm sterile-filtered	0.2 µm sterile-filtered

<sup>1</sup>Using bovine serum albumin (BSA) as a standard

<sup>2</sup>Anti-histidine monoclonal antibody, R&D Systems, MAB050 (1:5000 dilution)

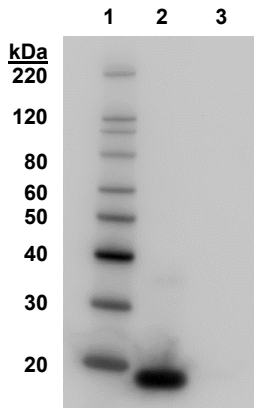
<sup>3</sup>Endosafe®-PTS Cartridge, Charles River Laboratories, Inc., PTS2005F

**Figure 1: SDS-PAGE Analysis**



Lane 1: Precision Plus Protein™ All Blue Protein Standard  
 Lane 2: NR-50757, 2 µg  
 Lane 3: NR-50757, 4 µg  
 Lane 4: BSA, 2 µg  
 Lane 5: BSA, 4 µg

Figure 2: Western Blot with Monoclonal Anti-Histidine Tag



Lane 1: MagicMark™ XP Protein Standard  
 Lane 2: NR-50757, 0.5 µg  
 Lane 3: BSA, 0.5 µg

/Sonia Bjorum Brower/  
 Sonia Bjorum Brower

Technical Manager or designee, ATCC Federal Solutions

24 JAN 2024

ATCC®, on behalf of BEI Resources, hereby represents and warrants that the material provided under this certificate has been subjected to the tests and procedures specified and that the results described, along with any other data provided in this certificate, are true and accurate to the best of ATCC®'s knowledge.

ATCC® is a trademark of the American Type Culture Collection.

You are authorized to use this product for research use only. It is not intended for human use.

