

**Escherichia coli K-12, Strain DC10B**

**Catalog No. NR-49804**

**Product Description:**

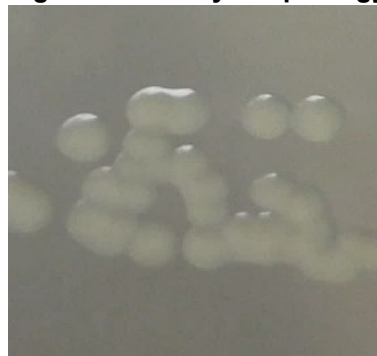
*Escherichia coli* (*E. coli*) K-12, strain DC10B is a DNA cytosine methyltransferase (*dcm*) deletion mutant that was produced from *E. coli* K-12 derivative strain DH10B via recombination-mediated genetic engineering (recombineering). Strain DC10B is a universal host for constructing plasmids for introduction into staphylococci and was deposited as  $\Delta dcm$  and resistant to streptomycin. NR-49804 lot 70062658 was produced by the inoculation of BEI Resources seed lot 63849793 into Tryptic Soy broth containing 25  $\mu\text{g/mL}$  streptomycin and incubated for 1 day at 37°C in an aerobic atmosphere. Broth inoculum was added to Tryptic Soy agar containing 25  $\mu\text{g/mL}$  streptomycin kolles, which were grown for 1 day at 37°C in an aerobic atmosphere to produce this lot. Quality control testing was completed under propagation conditions unless otherwise noted.

**Lot: 70062658**

**Manufacturing Date: 18AUG2023**

TEST	SPECIFICATIONS	RESULTS
<b>Phenotypic Analysis</b> Cellular morphology Colony morphology  Motility (wet mount)	Gram-negative rods Report results  Report results	Gram-negative rods Circular, convex, entire, smooth and cream (Figure 1)  Motile
VITEK® MS (MALDI-TOF)	<i>Escherichia coli</i> (99.9%)	<i>Escherichia coli</i> (99.9%)
<b>Genotypic Analysis</b> Sequencing of 16S ribosomal RNA gene (~ 1470 base pairs)	≥ 99% sequence identity to <i>E. coli</i> type strain (GenBank: JMST01000030.1)	99.7% sequence identity to <i>E. coli</i> type strain (GenBank: JMST01000030.1)
<b>Confirmation of Streptomycin Resistance</b>	Growth	Growth
<b>Purity</b> 7 days at 37°C in an aerobic atmosphere with and without 5% CO <sub>2</sub> on Tryptic Soy agar with 5% defibrinated sheep blood	Consistent with expected colony morphology	Consistent with expected colony morphology
<b>Viability</b>	Growth	Growth

**Figure 1: Colony Morphology**



/Sonia Bjorum Brower/

Sonia Bjorum Brower

23 JAN 2024

Technical Manager or designee, ATCC Federal Solutions

ATCC®, on behalf of BEI Resources, hereby represents and warrants that the material provided under this certificate has been subjected to the tests and procedures specified and that the results described, along with any other data provided in this certificate, are true and accurate to the best of ATCC®'s knowledge.

ATCC® is a trademark of the American Type Culture Collection.

You are authorized to use this product for research use only. It is not intended for human use.

