

Genomic DNA from *Vibrio cholerae*, Strain 395

Catalog No. NR-15694

Product Description:

Genomic DNA was extracted from a preparation of *Vibrio cholerae* (*V. cholerae*), strain 395 (Ogawa 395; O395). The bacterial preparation used for extraction of genomic DNA was produced by culture of BEI Resources NR-9906 lot 58954302. Genomic DNA was extracted using proprietary technology and is provided in TE buffer (10 mM Tris-HCl, 1 mM EDTA, pH ~ 8.0).

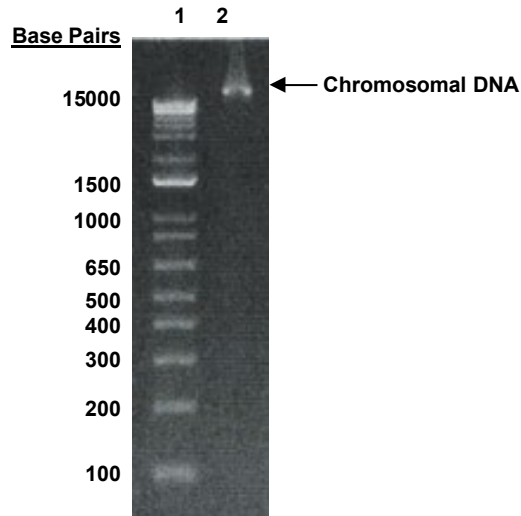
Lot: 70050387

Manufacturing Date: 22SEP2022

TEST	SPECIFICATIONS	RESULTS
Genotypic Analysis Sequencing of 16S ribosomal RNA gene (~ 1370 base pairs)	≥ 99% sequence identity to <i>V. cholerae</i> , strain O395 (GenBank: CP000627.1)	99.9% sequence identity to <i>V. cholerae</i> , strain O395 (GenBank: CP000627.1)
Agarose Gel Electrophoresis	High molecular weight chromosomal DNA	High molecular weight chromosomal DNA (Figure 1)
Concentration by PicoGreen® Measurement	0.7 to 1.5 µg in 25 to 100 µL/vial	1.3 µg in 31 µL/vial (40 µg/mL)
Amount per Vial	0.7 to 1.5 µg	1.3 µg
Functional Activity by PCR Amplification 16S ribosomal RNA gene	~ 1500 base pair amplicon	~ 1500 base pair amplicon
OD₂₆₀/OD₂₈₀ Ratio	1.7 to 2.1	1.8
Bacterial Inactivation¹ 10% of total yield inoculated in Brain Heart Infusion medium for 14 days at 37°C in an anaerobic atmosphere	No viable bacteria detected	No viable bacteria detected

¹An extraction procedure was used that has been shown to consistently inactivate 100% of Gram-positive and Gram-negative bacteria.

Figure 1: Agarose Gel Electrophoresis



Lane 1: Invitrogen™ TrackIt™ 1 Kb Plus DNA Ladder
Lane 2: 200 ng of NR-15694

/Sonia Bjorum Brower/
Sonia Bjorum Brower

Technical Manager or designee, ATCC Federal Solutions

23 FEB 2024

ATCC®, on behalf of BEI Resources, hereby represents and warrants that the material provided under this certificate has been subjected by ATCC® to the tests and procedures specified and that the results described, along with any other data provided in this certificate, are true and accurate to the best of ATCC®'s knowledge.

ATCC® is a trademark of the American Type Culture Collection.
You are authorized to use this product for research use only. It is not intended for human use.

