

Monoclonal Anti-SARS Coronavirus Recombinant Human Antibody, Clone CR3022 (produced in HEK293 Cells)

Catalog No. NR-52481

This reagent is the tangible property of the U.S. Government.

Product Description:

Human monoclonal antibody CR3022 was identified via an immune phage display library, constructed from lymphocytes of a convalescent severe acute respiratory syndrome coronavirus (SARS-CoV) patient. CR3022 is a neutralizing antibody that targets the receptor binding domain (RBD) of the spike (S) glycoprotein of SARS-CoV. NR-52481 features the CR3022 epitope introduced into a human IgG1k molecule. NR-52481 was produced by transfection of purified plasmids (from BEI Resources NR-53260) in human embryonic kidney HEK293F cells (FreeStyle™), purified by protein G chromatography and vialled in phosphate-buffered saline (PBS), pH 7.4.

Lot: 70035909

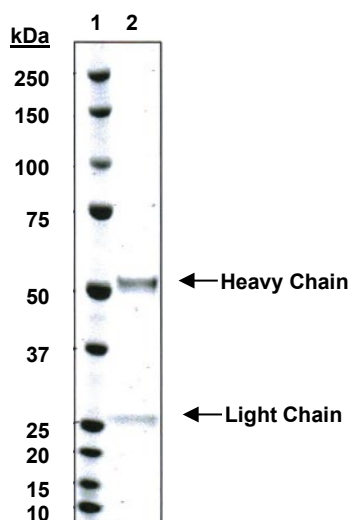
Manufacturing Date: 01JUN2020

TEST	SPECIFICATIONS	RESULTS
SDS-PAGE Analysis (Li-Cor Odyssey Imaging)	Correct molecular weight (MW) for heavy and light chains (reduced) Protein bands of interest represent > 90% of total staining intensity	Correct molecular weight (MW) for heavy and light chains (reduced) (Figure 1) Protein bands of interest represent 100% of total staining intensity
Concentration by Bicinchoninic Acid Assay Using Bovine Serum Albumin as standard	Report results	0.1 mg/ml
Functional Activity Western blot analysis ELISA	Report results Report results	Reactive ¹ Reactive (Figure 2) ²
Sterility	0.22 µm filter-sterilized	0.22 µm filter-sterilized

¹Recognizing 1 µg SARS-CoV-2 RBD protein (BEI Resources NR-52366), using a 1:5000 dilution of NR-52481 as primary antibody.

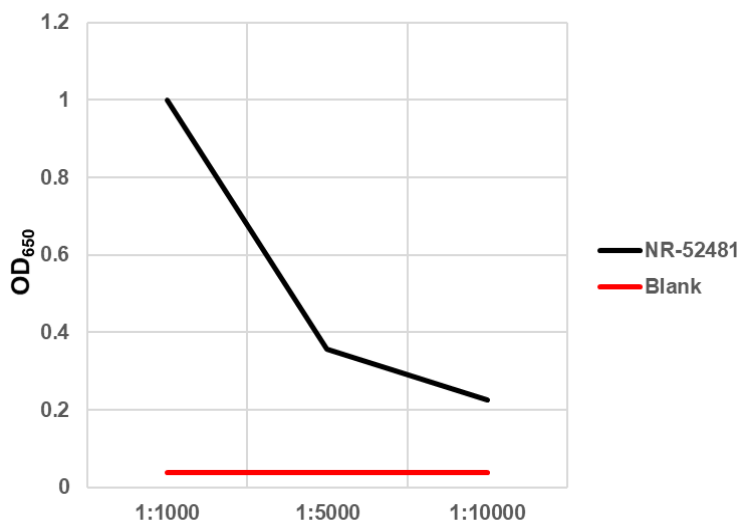
²Using SARS-CoV-2 RBD protein (BEI Resources NR-52366) as the antigen, and 5% milk as the blank.

Figure 1: SDS-PAGE Analysis



Lane 1: Molecular Weight Marker
Lane 2: NR-52481 (1.5 µg; reduced)

Figure 2: ELISA



/Sonia Bjorum Brower/

Sonia Bjorum Brower

01 MAR 2024

Technical Manager or designee, ATCC Federal Solutions

ATCC®, on behalf of BEI Resources, hereby represents and warrants that the material provided under this certificate has been subjected to the tests and procedures specified and that the results described, along with any other data provided in this certificate, are true and accurate to the best of ATCC®'s knowledge.

ATCC® is a trademark of the American Type Culture Collection.

You are authorized to use this product for research use only. It is not intended for human use.

