

**Staphylococcus capitis, Strain VCU116**

**Catalog No. NR-46394**

**Product Description:**

*Staphylococcus capitis* (*S. capitis*), strain VCU116 is of unknown origin. NR-46394 was produced by the inoculation of BEI Resources seed lot 630406781 into Tryptic Soy broth and incubated for 1 day at 37°C in an aerobic atmosphere. Broth inoculum was added to Tryptic Soy agar with 5% defibrinated sheep blood kolles which were grown for 1 day at 37°C in an aerobic atmosphere. Quality control testing was completed under propagation conditions unless otherwise noted.

**Lot: 70061799**

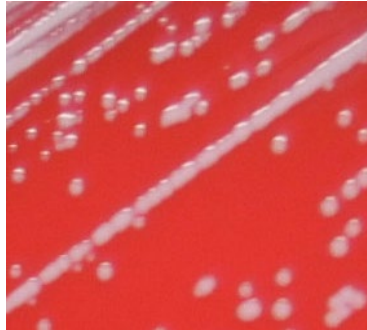
**Manufacturing Date: 12JUL2023**

BEI Resources is committed to ensuring digital accessibility for people with disabilities. This Certificate of Analysis contains complex tables and may not be fully accessible. Please let us know if you encounter accessibility barriers and a fully accessible document will be provided: E-mail: [Contact@BEIResources.org](mailto:Contact@BEIResources.org). We try to respond to feedback within 24 hours.

TEST	SPECIFICATIONS	RESULTS
<b>Phenotypic Analysis</b> Cellular morphology Colony morphology  Motility (wet mount) Hemolysis 1 day at 37°C in an aerobic atmosphere on Tryptic Soy agar with 5% defibrinated sheep blood  Biochemical characterization Catalase 1 day at 37°C in an aerobic atmosphere on Tryptic Soy agar Coagulase VITEK® MS (MALDI-TOF)	Gram-positive cocci Report results  Report results Report results  Positive  Report results <i>S. capitis</i>	Gram-positive cocci Circular, convex, entire, smooth and gray (Figure 1) Non-motile β-hemolytic  Positive  Negative <i>S. capitis</i> (99.9%)
<b>Genotypic Analysis</b> Sequencing of 16S ribosomal RNA gene (~ 1490 base pairs)	≥ 99% sequence identity to <i>S. aureus</i> , strain VCU116 (GenBank: AFTX01000036.1)	99.9% sequence identity to <i>S. aureus</i> , strain VCU116 (GenBank: AFTX01000036.1) <sup>1</sup>
<b>Purity (post-freeze)</b> 7 days at 37°C in an aerobic atmosphere with and without 5% CO <sub>2</sub> on Tryptic Soy agar with 5% defibrinated sheep blood	Growth consistent with expected colony morphology	Growth consistent with expected colony morphology
<b>Viability (post-freeze)</b>	Growth	Growth

<sup>1</sup>Also consistent with other *Staphylococcus* species

Figure 1: Colony Morphology



/Sonia Bjorum Brower/  
Sonia Bjorum Brower

Technical Manager or designee, ATCC Federal Solutions

14 MAR 2024

ATCC®, on behalf of BEI Resources, hereby represents and warrants that the material provided under this certificate has been subjected to the tests and procedures specified and that the results described, along with any other data provided in this certificate, are true and accurate to the best of ATCC®'s knowledge.

ATCC® is a trademark of the American Type Culture Collection.

You are authorized to use this product for research use only. It is not intended for human use.

