

***Prevotella disiens*, Strain DNF00882**

Catalog No. HM-1171

Product Description:

Prevotella disiens (*P. disiens*), strain DNF00882 was isolated on October 17, 2011, from vaginal fluid collected from a woman that tested positive for bacterial vaginosis in the United States. HM-1171 was produced by inoculation of BEI Resources seed lot 63140942 into Modified Chopped Meat medium and incubated for 2 days at 37°C in an anaerobic atmosphere (< 5% O₂; Remel™ Pack-Anaero™). The material from the initial growth was passaged once Tryptic Soy agar with 5% defibrinated sheep blood kolles for 2 days at 37°C in an anaerobic atmosphere to produce this lot. Quality control testing was completed under propagation conditions unless otherwise noted.

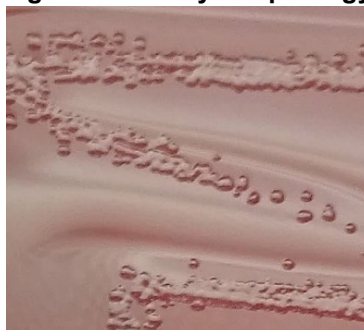
Note: Quality control of HMP material is only performed to demonstrate that the material distributed by BEI Resources is identical to the deposited material. It should not be considered a complete characterization of the deposited organism.

Lot: 70064782

Manufacturing Date: 17NOV2023

TEST	SPECIFICATIONS	RESULTS
Phenotypic Analysis Cellular morphology Colony morphology Motility (wet mount)	Gram-negative rods Report results Report results	Gram-negative rods Circular, convex, entire, smooth and gray (Figure 1) Non-motile
Genotypic Analysis Sequencing of 16S ribosomal RNA gene (~ 1440 base pairs)	≥ 99% sequence identity to <i>Prevotella disiens</i> , strain DNF00882 (GenBank: JRNRO1000204.1)	99.9% sequence identity to <i>Prevotella disiens</i> , strain DNF00882 (GenBank: JRNRO1000204.1)
Purity (post-freeze) Anaerobic 7 days at 37°C on Tryptic Soy agar with 5% defibrinated sheep blood Aerobic with 5% CO ₂ 7 days at 37°C on Tryptic Soy agar with 5% defibrinated sheep blood	Report results Report results	Growth No growth
Viability (post-freeze)	Growth	Growth

Figure 1: Colony Morphology



/Sonia Bjorum Brower/

Sonia Bjorum Brower

05 FEB 2024

Technical Manager or designee, ATCC Federal Solutions

ATCC®, on behalf of BEI Resources, hereby represents and warrants that the material provided under this certificate has been subjected to the tests and procedures specified and that the results described, along with any other data provided in this certificate, are true and accurate to the best of ATCC®'s knowledge.

ATCC® is a trademark of the American Type Culture Collection.

You are authorized to use this product for research use only. It is not intended for human use.

