

Acinetobacter baumannii, Strain MRSN 1196

Catalog No. NR-52157

This reagent is the tangible property of the U.S. Government.

Product Description:

Acinetobacter baumannii (*A. baumannii*), strain MRSN 1196 was isolated in 2010 from a human wound sample in the United States as part of a global surveillance program. NR-52157 was deposited as multi-locus sequence type (MLST) ST 108, resistant to cefepime, ceftazidime, ceftriaxone, ciprofloxacin, gentamicin, levofloxacin and trimethoprim/sulfamethoxazole, sensitive to ampicillin/sulbactam, colistin, imipenem, meropenem and tetracycline and intermediately resistant to amikacin and tobramycin. NR-52157 was produced by inoculation of BEI Resources seed lot 70039389 into Tryptic Soy broth and grown for 1 day at 37°C in an aerobic atmosphere. Broth inoculum was added to Tryptic Soy agar kolles, which were grown for 1 day at 37°C in an aerobic atmosphere to produce this lot. Quality control testing was completed under propagation conditions unless otherwise noted.

Lot: 70056284

Manufacturing Date: 20OCT2022

BEI Resources is committed to ensuring digital accessibility for people with disabilities. This Certificate of Analysis contains complex tables and may not be fully accessible. Please let us know if you encounter accessibility barriers and a fully accessible document will be provided: E-mail: Contact@BEIResources.org. We try to respond to feedback within 24 hours.

TEST	SPECIFICATIONS	RESULTS
Phenotypic Analysis Cellular morphology Colony morphology Growth at 44°C ± 2°C ¹ 1 day in an aerobic atmosphere on Tryptic Soy agar Motility BBL™ Motility Test Medium w/TTC Indicator for 1 day at 35°C in an aerobic atmosphere VITEK® MS (MALDI-TOF)	Gram-negative rods Report results Growth Report results <i>A. baumannii</i>	Gram-negative rods Circular, convex, entire, smooth and cream (Figure 1) Growth Non-Motile ² <i>A. baumannii</i> (99.9%)
Antibiotic Susceptibility Profile^{3,4} Amikacin Ampicillin/sulbactam Cefepime Ceftriaxone Ceftazidime Ciprofloxacin Colistin ⁵ Gentamicin Imipenem Levofloxacin Meropenem Trimethoprim/sulfamethoxazole Tobramycin Tetracycline	Intermediate Sensitive Resistant Resistant Resistant Resistant Resistant Sensitive Sensitive Resistant Sensitive Resistant Intermediate Sensitive	Intermediate (32 µg/mL) Sensitive (2 µg/mL) Resistant (32 µg/mL) Resistant (≥ 64 µg/mL) Resistant (≥ 64 µg/mL) Resistant (≥ 4 µg/mL) Sensitive (≤ 0.25 µg/mL) Resistant (24 µg/mL) Sensitive (1.5 µg/mL) Resistant (≥ 32 µg/mL) Sensitive (≤ 1 µg/mL) Resistant (≥ 320 µg/mL) Sensitive (4 µg/mL) ⁶ Resistant (≥ 256 µg/mL) ⁷
Genotypic Analysis Sequencing of 16S ribosomal RNA gene (~ 1470 base pairs)	≥ 99% sequence identity to <i>A. baumannii</i> , strain MRSN 1196 (GenBank: VHHB01000067.1)	100% sequence identity to <i>A. baumannii</i> , strain MRSN 1196 (GenBank: VHHB01000067.1)
Purity 7 days at 37°C in an aerobic atmosphere with and without 5% CO ₂ on Tryptic Soy agar	Growth consistent with expected colony morphology	Growth consistent with expected colony morphology

TEST	SPECIFICATIONS	RESULTS
Viability	Growth	Growth

¹Growth at 44°C differentiates *A. baumannii* from *A. calcoaceticus* and *A. pittii*, which do not grow at 44°C.

²BEI Resources seed lot 70039388 was motile.

³Minimum Inhibitory Concentration (MIC); MIC Interpretation Guideline: CLSI M100-S28 (2018)

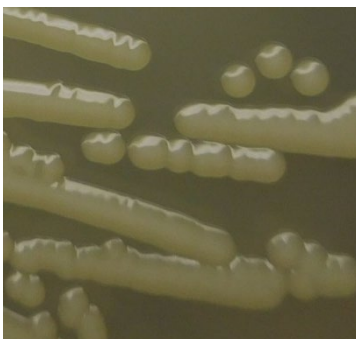
⁴Antibiotic susceptibility was tested using a combination of VITEK®2 GN81 and E-test strips.

⁵Testing was performed on BEI Resources seed lot 70039388

⁶Susceptibility result for this antibiotic is within one doubling dilution of specification, which is considered an equivalent result.

⁷*A. baumannii*, strain MRSN 1196 was deposited as sensitive to tetracycline but showed a MIC of $\geq 256 \mu\text{g per mL}$ (interpreted as resistant) for tetracycline during QC testing. Testing was performed in duplicate.

Figure 1: Colony Morphology



/Sonia Bjorum Brower/

Sonia Bjorum Brower

28 SEP 2023

Technical Manager or designee, ATCC Federal Solutions

ATCC®, on behalf of BEI Resources, hereby represents and warrants that the material provided under this certificate has been subjected to the tests and procedures specified and that the results described, along with any other data provided in this certificate, are true and accurate to the best of ATCC®'s knowledge.

ATCC® is a trademark of the American Type Culture Collection.

You are authorized to use this product for research use only. It is not intended for human use.

