

Genomic DNA from *Campylobacter coli*, Strain JV20

Catalog No. HM-296D

Product Description:

Genomic DNA was obtained from a preparation of *Campylobacter coli* (*C. coli*), strain JV20, which was isolated from a human gastrointestinal tract. The bacterial preparation used for extraction of genomic DNA was produced by culture of BEI Resources seed lot 70058046 using proprietary technology and vialled in TE buffer (10 mM Tris-HCl, 1 mM EDTA, pH ~ 8.0).

Note: Quality control of HMP organisms used for DNA extraction is only performed to demonstrate that the material produced by BEI Resources is identical to the deposited material. It should not be considered a complete characterization of the deposited organism.

Lot: 70063249

Manufacturing Date: 17OCT2023

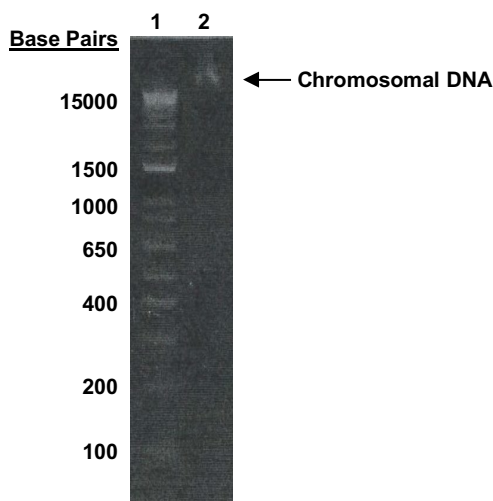
TEST	SPECIFICATIONS	RESULTS
Genotypic Analysis Sequencing of 16S ribosomal RNA gene (~ 1410 base pairs)	≥ 99% sequence identity to <i>C. coli</i> , strain JV20 (GenBank: AEER01000028)	100% sequence identity to <i>C. coli</i> , strain JV20 (GenBank: AEER01000028)
Agarose Gel Electrophoresis	High molecular weight chromosomal DNA	High molecular weight chromosomal DNA (Figure 1)
Concentration by PicoGreen® Measurement	0.7 µg to 1.5 µg in 25 to 100 µL per vial	1.1 µg in 32 µL per vial (30 µg/mL)
Amount per Vial	0.7 µg to 1.5 µg	1.1 µg
Functional Activity by PCR Amplification 16S ribosomal RNA gene	~ 1500 base pair amplicon	~ 1500 base pair amplicon
OD₂₆₀/OD₂₈₀ Ratio	1.7 to 2.1	1.8
Bacterial Inactivation 10% of total yield plated on agar ^{1,2}	No viable bacteria detected	No viable bacteria detected

¹14 days at 37°C in a microaerophilic atmosphere on Trypticase™ soy agar with 5% sheep blood

²An extraction procedure was used that has been shown to consistently inactivate 100% of Gram-positive and Gram-negative bacteria.

Certificate of Analysis for HM-296D

Figure 1: Agarose Gel Electrophoresis



Lane 1: Invitrogen™ TrackIt™ 1 Kb Plus DNA Ladder

Lane 2: 200 ng of HM-296D

/Sonia Bjorum Brower/

Sonia Bjorum Brower

Technical Manager or designee, ATCC Federal Solutions

09 JAN 2023

ATCC®, on behalf of BEI Resources, hereby represents and warrants that the material provided under this certificate has been subjected by ATCC® to the tests and procedures specified and that the results described, along with any other data provided in this certificate, are true and accurate to the best of ATCC®'s knowledge.

ATCC® is a trademark of the American Type Culture Collection.

You are authorized to use this product for research use only. It is not intended for human use.

