

Prevotella nigrescens, Strain F0103

Catalog No. HM-271

Product Description:

Prevotella nigrescens (*P. nigrescens*), strain F0103 was isolated from a human oral cavity. HM-271 was produced by the inoculation of BEI Resources seed lot 60486669 into Modified Chopped Meat medium and incubated for 3 days at 37°C in an anaerobic atmosphere (< 5% O₂; Remel™ Pack-Anaero™). Broth inoculum was added to Tryptic Soy agar with 5% defibrinated sheep blood kolles, which were grown for 3 days at 37°C in an anaerobic atmosphere to produce this lot. Quality control testing was completed under propagation conditions unless otherwise noted.

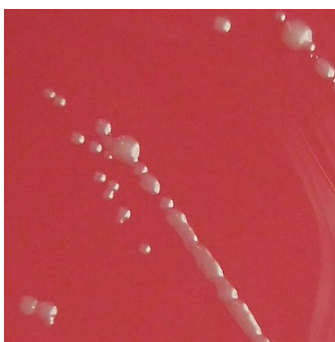
Note: Quality control of HMP material is only performed to demonstrate that the material distributed by BEI Resources is identical to the deposited material. It should not be considered a complete characterization of the deposited organism.

Lot: 70056676

Manufacturing Date: 05DEC2022

| TEST | SPECIFICATIONS | RESULTS |
|---|--|--|
| Phenotypic Analysis Cellular morphology Colony morphology Motility (wet mount) | Gram-negative rods Report results Report results | Gram-negative rods Circular, convex, entire, smooth and gray (Figure 1) Non-motile |
| Genotypic Analysis Sequencing of 16S ribosomal RNA gene (~ 1430 base pairs) | ≥ 99% sequence identity to <i>P. nigrescens</i> , strain F0103 (GenBank: ADGJ01000112.1) | 99.9% sequence identity to <i>P. nigrescens</i> , strain F0103 (GenBank: ADGJ01000112.1) |
| Purity (post-freeze) Anaerobic 7 days at 37°C on Tryptic Soy agar with 5% defibrinated sheep blood Aerobic with 5% CO ₂ 7 days at 37°C on Tryptic Soy agar with 5% defibrinated sheep blood | Consistent with expected colony morphology No growth | Consistent with expected colony morphology No growth |
| Viability (post-freeze) | Growth | Growth |

Figure 1: Colony Morphology



Certificate of Analysis for HM-271

/Sonia Bjorum Brower/

Sonia Bjorum Brower

12 SEP 2023

Technical Manager or designee, ATCC Federal Solutions

ATCC®, on behalf of BEI Resources, hereby represents and warrants that the material provided under this certificate has been subjected to the tests and procedures specified and that the results described, along with any other data provided in this certificate, are true and accurate to the best of ATCC®'s knowledge.

ATCC® is a trademark of the American Type Culture Collection.

You are authorized to use this product for research use only. It is not intended for human use.

