

Escherichia coli, Strain GM2163λpir

Catalog No. NR-50351

Product Description:

Escherichia coli (*E. coli*), strain GM2163λpir contains the *pir* gene, which allows genetic manipulations of vectors prior to transfer into *Staphylococcus* species. This strain is also a Dam and Dcm methylase mutant for the transfer of plasmids into *Staphylococcus* isolates that do not accept *E. coli* DNA easily. Strain GM2163λpir has genotype F⁻*ara-14 leuB6 fhuA31 lacY1 tsx78 glnV44 galk2 galT22 mcrA dcm-6 hisG4 rfbD1 rpsL136 dam13::Tn9 xylA5 mtl-1 thi-1 mcrB1 hsdR2 λpir. The deposited material was inoculated into Tryptic Soy broth and grown for 1 day at 37°C in an aerobic atmosphere. Broth inoculum was added to a Tryptic Soy agar plate, which was grown for 1 day at 37°C in an aerobic atmosphere. One colony was selected from the agar growth and used to inoculate a Tryptic Soy agar plate, which was grown for 1 day at 37°C in an aerobic atmosphere. A loopful of colonies from this Tryptic Soy agar plate was suspended in Tryptic Soy broth with 10% glycerol, vialled and frozen. NR-50351 was produced by inoculation of the frozen subculture into Tryptic Soy broth and grown for 1 day at 37°C in an aerobic atmosphere. Broth inoculum was added to Tryptic Soy agar kolles, which were grown for 1 day at 37°C in an aerobic atmosphere to produce this lot. Quality control testing was completed under propagation conditions unless otherwise noted.*

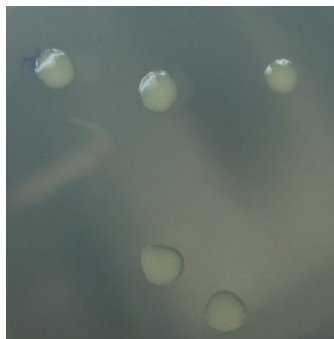
Lot: 70057129

Manufacturing Date: 11JAN2023

TEST	SPECIFICATIONS	RESULTS
Phenotypic Analysis Cellular morphology Colony morphology Motility (wet mount) VITEK® MS (MALDI-TOF)	Gram-negative rods Report results Report results <i>E. coli</i>	Gram-negative rods Circular, low convex, entire, smooth and cream (Figure 1) Motile <i>E. coli</i> (99.9%)
Genotypic Analysis Sequencing of 16S ribosomal RNA gene (~ 1480 base pairs)	≥ 99% sequence identity to <i>E. coli</i> , strain DH5α (GenBank: JRBB01000068)	100% sequence identity to <i>E. coli</i> , strain DH5α (GenBank: JRBB01000068) ¹
Purity (post-freeze) 7 days at 37°C in an aerobic atmosphere with 5% CO ₂ on Tryptic Soy agar with 5% defibrinated sheep blood	Growth consistent with expected colony morphology	Growth consistent with expected colony morphology
Viability (post-freeze)	Growth	Growth

¹Also consistent with *Shigella flexneri*

Figure 1: Colony Morphology



/Sonia Bjorum Brower/

Sonia Bjorum Brower

20 MAR 2024

Technical Manager or designee, ATCC Federal Solutions

ATCC®, on behalf of BEI Resources, hereby represents and warrants that the material provided under this certificate has been subjected to the tests and procedures specified and that the results described, along with any other data provided in this certificate, are true and accurate to the best of ATCC®'s knowledge.

ATCC® is a trademark of the American Type Culture Collection.

You are authorized to use this product for research use only. It is not intended for human use.

