

Escherichia coli* – *Staphylococcus aureus* Shuttle Vector pKK22, Recombinant in *Escherichia coli

Catalog No. NR-50348

Product Description:

NR-50348 is a preserved culture of *Escherichia coli* (*E. coli*), strain DH5αλpir containing the *E. coli* – staphylococcal shuttle vector pKK22. Vector pKK22 contains the *E. coli* R6Ky origin of replication and is for use in *E. coli* and *Staphylococcus aureus* (*S. aureus*) USA300 strains that contain LAC-p01, rendering them isogenic. Vector pKK22 contains a single trimethoprim resistance cassette that is functional in both *E. coli* and *S. aureus*. NR-50348 was produced by inoculation of BEI Resources seed lot 2092 into Tryptic Soy broth with 10 µg/mL trimethoprim and grown for 1 day at 37°C in an aerobic atmosphere. Broth inoculum was added to Tryptic Soy agar with 10 µg/mL trimethoprim kolles, which were grown for 1 day at 37°C in an aerobic atmosphere to produce this lot. Quality control testing was completed under propagation conditions unless otherwise noted.

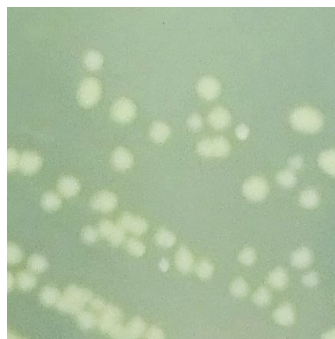
Lot: 70056136

Manufacturing Date: 13OCT2022

TEST	SPECIFICATIONS	RESULTS
Phenotypic Analysis Cellular morphology Colony morphology Motility (wet mount) VITEK® 2 (GN card)	Gram-negative rods Report results Report results <i>E. coli</i> (≥ 89%)	Gram-negative rods Circular, low convex, entire, smooth and cream (Figure 1) Motile <i>E. coli</i> (98%)
Confirmation of Trimethoprim Resistance	Growth	Growth
Genotypic Analysis Sequencing of 16S ribosomal RNA gene (~ 1410 base pairs)	≥ 99% sequence identity to <i>E. coli</i> , Strain DH5α (GenBank: JRBB01000068.1)	99.9% sequence identity to <i>E. coli</i> , Strain DH5α (GenBank: JRBB01000068.1) ¹
Purity (post-freeze) 7 days at 37°C in an aerobic atmosphere with 5% CO ₂ on Tryptic Soy agar with 5% defibrinated sheep blood	Growth consistent with expected colony morphology	Growth consistent with expected colony morphology
Viability (post-freeze)	Growth	Growth

¹Also consistent with *Shigella flexneri*

Figure 1: Colony Morphology



/Sonia Bjorum Brower/

Sonia Bjorum Brower

20 MAR 2024

Technical Manager or designee, ATCC Federal Solutions

ATCC®, on behalf of BEI Resources, hereby represents and warrants that the material provided under this certificate has been subjected to the tests and procedures specified and that the results described, along with any other data provided in this certificate, are true and accurate to the best of ATCC®'s knowledge.

ATCC® is a trademark of the American Type Culture Collection.

You are authorized to use this product for research use only. It is not intended for human use.

