

**Genomic DNA from *Plasmodium falciparum*, Strain Dd2**

**Catalog No. MRA-156G**

This reagent is the tangible property of the U.S. Government.

**Product Description:**

MRA-156G is a genomic DNA preparation of *Plasmodium falciparum* (*P. falciparum*), strain Dd2. MRA-156G lot 70062980 was produced from a cell culture of BEI Resources MR-MRA-156 lot 59523802. Genomic DNA was extracted using QIAamp DNA Blood Midi Kit and vialled in TE buffer (10 mM Tris-HCl and 0.5 mM EDTA, pH 9).

**Lot: 70062980**

**Manufacturing Date: 25JAN2024**

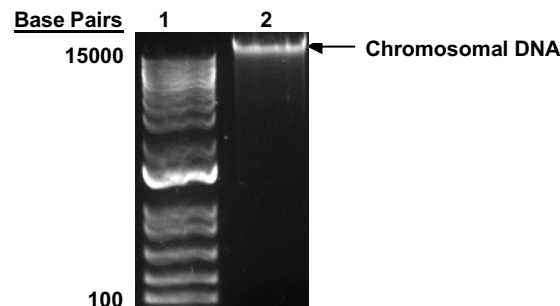
TEST	SPECIFICATIONS	RESULTS
<b>Sequencing of Merozoite Surface Protein 2 (MSP2) gene (~ 790 base pairs)</b>	≥ 99% sequence identity to <i>P. falciparum</i> , strain Dd2 (GenBank: AASM01000018.1)	100% sequence identity to <i>P. falciparum</i> , strain Dd2 (GenBank: AASM01000018.1)
<b>Agarose Gel Electrophoresis</b>	High molecular weight chromosomal DNA	High molecular weight chromosomal DNA (Figure 1)
<b>Concentration by PicoGreen® Measurement</b>	Report results	0.5 µg in 50 µL per vial (10 µg/mL)
<b>Amount per Vial</b>	Report results	~ 0.5 µg
<b>Functional Activity by PCR Amplification</b> MSP2 gene locus <sup>1</sup>	~ 600-900 base pair amplicon	~ 800 base pair amplicon
<b>OD<sub>260</sub>/OD<sub>280</sub> Ratio</b>	1.7 to 2.1	2.0
<b>Protozoan Inactivation</b> Human erythrocytes exposed to 10% of total yield of MRA-156G <sup>2,3</sup>	No parasitemia observed	No parasitemia observed
<b>Mycoplasma Contamination</b> DNA Detection by PCR	None detected	None detected

<sup>1</sup>Primer sequences and conditions for PCR are available upon request.

<sup>2</sup>15 days in complete RPMI culture medium at 37°C in sealed flasks outgassed with blood-gas atmosphere (90% N<sub>2</sub>, 5% CO<sub>2</sub>, 5% O<sub>2</sub>). Complete RPMI culture medium was changed and parasitemia checked every 1 to 3 days.

<sup>3</sup>An extraction procedure was used that has been shown to consistently inactivate 100% of *Plasmodium* parasites.

**Figure 1: Agarose Gel Electrophoresis**



Lane 1: Invitrogen™ TrackIt™ 1 Kb Plus DNA Ladder  
Lane 2: ~ 200 ng of MRA-156G

/Sonia Bjorum Brower/

Sonia Bjorum Brower

Technical Manager or designee, ATCC Federal Solutions

04 APR 2024

ATCC®, on behalf of BEI Resources, hereby represents and warrants that the material provided under this certificate has been subjected to the tests and procedures specified and that the results described, along with any other data provided in this certificate, are true and accurate to the best of ATCC®'s knowledge.

ATCC® is a trademark of the American Type Culture Collection.

You are authorized to use this product for research use only. It is not intended for human use.

