

**Escherichia coli, Strain CFT073**

**Catalog No. NR-2654**

(Derived from ATCC® 700928™)

**Product Description:**

*Escherichia coli* (*E. coli*), strain CFT073 was originally obtained in 2000 from the blood of a woman with acute pyelonephritis and was deposited by Dr. G. Plunkett. NR-2654 was produced by inoculation of BEI Resources seed lot 7526272 into Tryptic Soy broth and grown for 1 day at 37°C in an aerobic atmosphere. Broth inoculum was added to Tryptic Soy agar kolles, which were grown for 1 day at 37°C in an aerobic atmosphere to produce this lot. Quality control testing was completed under propagation conditions unless otherwise noted.

**Lot: 70068831**

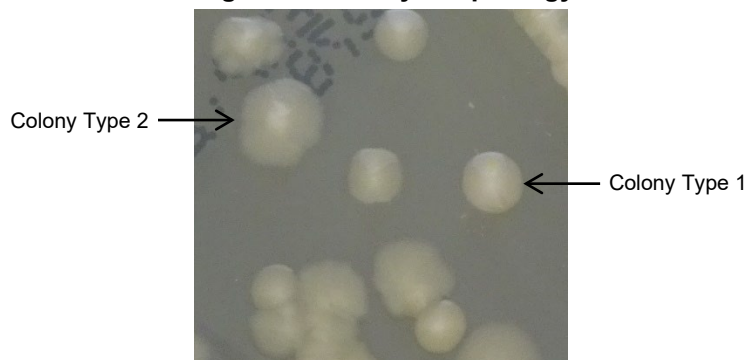
**Manufacturing Date: 07JUN2024**

TEST	SPECIFICATIONS	RESULTS
<b>Phenotypic Analysis</b> Cellular morphology Colony morphology <sup>1</sup>  Motility (wet mount) VITEK® MS (MALDI-TOF)	Gram-negative rods Report results  Report results <i>Escherichia coli</i>	Gram-negative rods Colony type 1: Circular, convex, entire, smooth and cream (Figure 1) Colony type 2: Irregular, convex, undulate and cream (Figure 1) Motile <i>Escherichia coli</i> (99.9%)
<b>Genotypic Analysis</b> Sequencing of 16S ribosomal RNA gene (~ 1440 base pairs)	≥ 99% sequence identity to <i>E. coli</i> , strain CFT073 (GenBank: AE014075.1)	99.9% sequence identity to <i>E. coli</i> , strain CFT073 (GenBank: AE014075.1) <sup>2</sup>
<b>Purity</b> 7 days at 37°C in an aerobic atmosphere with and without 5% CO <sub>2</sub> on Tryptic Soy agar	Consistent with expected colony morphology	Consistent with expected colony morphology
<b>Viability</b>	Growth	Growth

<sup>1</sup>Two colony types were observed. VITEK® MS (MALDI-TOF) analysis identified cells from both colony types as *E. coli*.

<sup>2</sup>Also consistent with *Shigella* species.

**Figure 1: Colony Morphology**



/Sonia Bjorum Brower/

Sonia Bjorum Brower

06 NOV 2024

Technical Manager or designee, ATCC Federal Solutions

ATCC®, on behalf of BEI Resources, hereby represents and warrants that the material provided under this certificate has been subjected to the tests and procedures specified and that the results described, along with any other data provided in this certificate, are true and accurate to the best of ATCC®'s knowledge.

ATCC® is a trademark of the American Type Culture Collection.

You are authorized to use this product for research use only. It is not intended for human use.

