

Candida tropicalis, Strain CAB54-6763-3

Catalog No. HM-1124

Product Description:

Candida tropicalis (*C. tropicalis*), strain CAB54-6763-3 was isolated in February 2012 from human blood in St. Louis, Missouri, USA. HM-1124 was produced by inoculation of the BEI Resources seed lot 63795191 onto Yeast Mold agar and incubated for 3 days at 25°C in an aerobic atmosphere to produce this lot. Yeast was harvested from agar plates with 10% glycerol prior to vialing. Quality control testing was completed under propagation conditions unless otherwise noted.

Note: Quality control of HMP material is only performed to demonstrate that the material distributed by BEI Resources is identical to the deposited material. It should not be considered a complete characterization of the deposited organism.

Lot: 70067508

Manufacturing Date: 10MAY2024

TEST	SPECIFICATIONS	RESULTS
Phenotypic Analysis Cellular morphology Colony morphology VITEK® 2 (YST card) VITEK® MS (MALDI-TOF)	Report results Report results <i>C. tropicalis</i> (≥ 89%) <i>C. tropicalis</i>	Subglobose to ovoid, in singles and in clumps; no pseudohyphae observed (Figure 1) Circular, butyrous and cream (Figure 2) <i>C. tropicalis</i> (98%) <i>C. tropicalis</i> (99.9%)
Genotypic Analysis Partial sequencing of 28S ribosomal RNA gene (~ 590 base pairs)	≥ 99% sequence identity to <i>C. tropicalis</i> type strain (GenBank: KT380847.1)	100% sequence identity to <i>C. tropicalis</i> type strain (GenBank: KT380847.1) ¹
Purity (post-freeze) 3 days at 25°C in an aerobic atmosphere in Nutrient broth with 0.1% Yeast Extract 3 days at 37°C in an aerobic atmosphere in Nutrient broth with 0.1% Yeast Extract	No bacterial growth No bacterial growth	No bacterial growth No bacterial growth
Viability (post-freeze)	Growth	Growth

Figure 1: Cellular Morphology

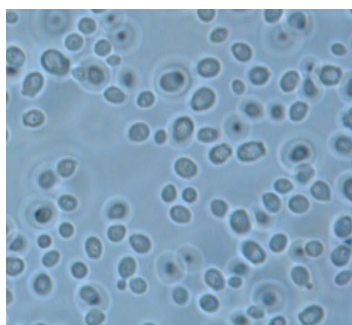


Figure 2: Colony Morphology



/Sonia Bjorum Brower/

Sonia Bjorum Brower

29 AUG 2024

Technical Manager or designee, ATCC Federal Solutions

ATCC®, on behalf of BEI Resources, hereby represents and warrants that the material provided under this certificate has been subjected to the tests and procedures specified and that the results described, along with any other data provided in this certificate, are true and accurate to the best of ATCC®'s knowledge.

ATCC® is a trademark of the American Type Culture Collection.

You are authorized to use this product for research use only. It is not intended for human use.

