

Monoclonal Anti-*Mycobacterium tuberculosis* LprG/P27 (Gene Rv1411c), Clone A (produced *in vitro*)

Catalog No. NR-55708

This reagent is the tangible property of the U.S. Government.

Product Description:

Antibody Class: IgG_{1κ}

Antibody Designation: α-Rv1411c

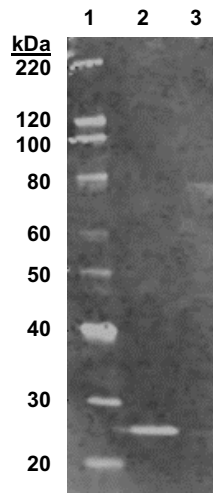
Monoclonal antibody to *Mycobacterium tuberculosis*, strain H37Rv lipoprotein G (LprG/P27) was produced in cell culture using a B cell hybridoma generated by the fusion of myeloma cells with immunized mouse splenocytes.

Lot: 70046983

Manufacturing Date: 29SEP2021

TEST	SPECIFICATIONS	RESULTS
Antibody Class	IgG _{1κ}	IgG _{1κ}
Functional Activity by Western Blot		
TX-114 soluble fraction (BEI Resources NR-14841)	Report results	Reactive (Figure 1)
Cytosol (CYT) fraction (BEI Resources NR-14835)	Report results	Non-reactive (Figure 1)
Sterility	0.22 μm filter-sterilized	0.22 μm filter-sterilized

Figure 1: Functional Activity by Western Blot



Lane 1: MagicMark™ XP Western Protein Standard
 Lane 2: TX-114 soluble fraction (BEI Resources NR-14841)
 Lane 3: CYT fraction (BEI Resources NR-14835)

/Sonia Bjorum Brower/

Sonia Bjorum Brower

Technical Manager or designee, ATCC Federal Solutions

07 OCT 2024

ATCC®, on behalf of BEI Resources, hereby represents and warrants that the material provided under this certificate has been subjected to the tests and procedures specified and that the results described, along with any other data provided in this certificate, are true and accurate to the best of ATCC®'s knowledge.

ATCC® is a trademark of the American Type Culture Collection.

You are authorized to use this product for research use only. It is not intended for human use.

