

**GroES (Gene Rv3418c), Purified Native Protein from *Mycobacterium tuberculosis*, Strain H37Rv****Catalog No. NR-14861**

This reagent is the tangible property of the U.S. Government.

**Product Description:**

NR-14861 is a preparation of the GroES (Gene Rv3418c) purified native proteins from the culture filtrate of *Mycobacterium tuberculosis*, strain H37Rv. A supernatant from a 40% saturated ammonium sulfate precipitation of culture filtrate proteins were precipitated with 70% saturated ammonium sulfate. The pellet was suspended and dialyzed. The material that did not bind to the concanavalin A column was resolved by reversed phase HPLC and the fractions containing GroES homologue were pooled and lyophilized.

**Lot: 70065749****Manufacturing Date: 14AUG2024**

Production and QC testing were performed by Colorado State University (CSU). The CSU production documentation for lot 24.Rv.8.14.GroES is attached.

ATCC®, on behalf of BEI Resources, hereby represents and warrants that the material provided under this certificate has been subjected by the contractor to the tests and procedures specified and that the results described, along with any other data provided in this certificate, are true and accurate to the best of ATCC®'s knowledge.

ATCC® is a trademark of the American Type Culture Collection.

You are authorized to use this product for research use only. It is not intended for human use.



WORK SHEET FOR PURIFIED NATIVE PROTEINS

General Information

BEI Catalog Number: NR-14861
BEI Lot Number: 70065749
Product Description: GroES Protein (Rv3418c)
CSU Lot Number: 24.Rv.8.14.GroES
Species: Mycobacterium tuberculosis
Strain: H37Rv

Purification Information

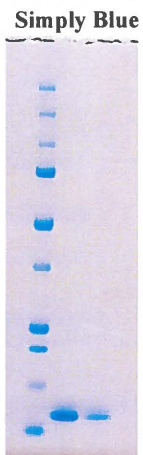
Starting material: GroES starting material, 50% ammonium sulfate cut CFP, 79.6 mg.
Starting material (select one):
x CFP: Filter Sterilized Yes
Cells: Irradiated N/A
Viability Test Performed: N/A
Protocol used (SOP #'s): PP035.5
Date started: 7.31.2024
Date completed: 8.14.2024
Notebook; page(s): Kieran Broder BEI#3 pgs 97-99, KB BEI#4 pgs 1-3

Quality Control Information

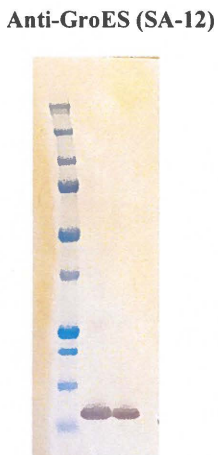
Clarity of product/suspension after dialysis: Clear
BCA: 2.169 ug/ul Notebook and page(s): KB BEI#4 pg 2
Total Protein: 6.50 mg
Simply Blue Date: 8.13.24 Notebook and page(s): KB BEI#4 pg 3
Western blot Date: 8.14.24 Antibody used: alphaSA-12, alphaMpt64
Notebook and page(s): KB BEI#4 pg 3
Mass Spectrometry information/file (if applicable): N/A

QC Gels:

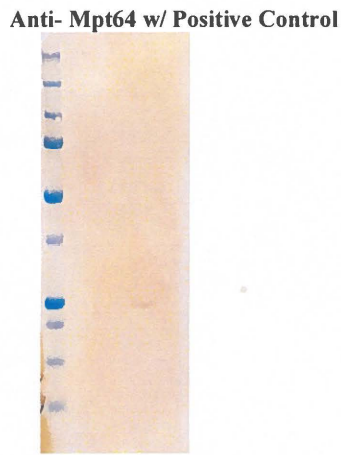
Simply Blue Stain: Western: 2 ug and 1 ug protein load w/ CFP control



2 ug / 1 ug



2 ug / 1 ug



2 ug / 1 ug / 2 ug CFP Control

Aliquot information: 13 vials @ 0.5 mg per vial

Handwritten signature and date 3/27/25
(Research Associate) (date)

Handwritten signature and date 3/27/25
(Laboratory Supervisor) (date)