

Babesia duncani, Strain WA1

Catalog No. NR-12311

This reagent is the tangible property of the U.S. Government.

Product Description:

Babesia duncani (*B. duncani*), strain WA1 was isolated in 1991 from human blood from the first reported case of babesiosis acquired in Washington State. NR-12311 was produced by inoculation of BEI Resources seed lot 58834153 into one immunosuppressed Golden Syrian hamster. Infection was allowed to progress for 10 days until the first peak of parasitemia was reached. Infected blood was collected and used to inoculate each of 6 immunosuppressed Golden Syrian hamsters with 0.5 mL of blood. Infection was allowed to progress for 3 days until the first peak of parasitemia was reached, and infected blood was collected from all 6 hamsters and pooled to produce this lot.

Lot: 70066138

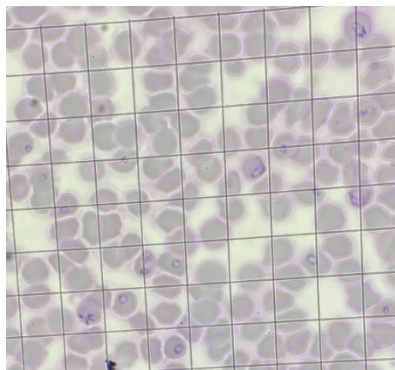
Manufacturing Date: 29FEB2024

TEST	SPECIFICATIONS	RESULTS
Cellular Morphology¹ 7 days infection by examination of Giemsa-stained blood smears	Report results	Rings visible (Figure 1)
Genotypic Analysis² Sequencing of internal transcribed spacer (ITS) 1, 5.8S ribosomal RNA gene, ITS 2 (~ 700 base pairs)	Consistent with <i>B. duncani</i>	Consistent with <i>B. duncani</i>
Level of Parasitemia² 3 days post-infection of a Golden Syrian hamster determined by microscopic counts of Giemsa-stained blood smears	Report results	9.2%
Viability¹ 7 days post-infection of a Golden Syrian hamster determined by microscopic counts of Giemsa-stained blood smears	Growth in inoculated hamster	Growth in inoculated hamster

¹Testing completed on vialled, post-freeze material

²Testing completed on bulk material prior to vialing and freezing

Figure 1: Cellular Morphology



/Sonia Bjorum Brower/

Sonia Bjorum Brower

11 JUN 2025

Technical Manager or designee, ATCC Federal Solutions

ATCC[®], on behalf of BEI Resources, hereby represents and warrants that the material provided under this certificate has been subjected by ATCC[®] to the tests and procedures specified and that the results described, along with any other data provided in this certificate, are true and accurate to the best of ATCC[®]'s knowledge.

ATCC[®] is a trademark of the American Type Culture Collection.

You are authorized to use this product for research use only. It is not intended for human use.

