

Trichomonas vaginalis, Strain NYCF20

Catalog No. NR-58897

Product Description:

Trichomonas vaginalis (*T. vaginalis*), strain NYCF20 was isolated in 2008 from a human with symptomatic trichomoniasis in Queens, New York, USA. Strain NYCF20 was deposited to BEI Resources as a genotype type 1 strain sensitive to metronidazole and positive for the *T. vaginalis* virus (TVV). NR-58897 was produced by cultivation of the deposited material in modified Trypticase – Yeast – Maltose (TYM) Basal medium supplemented with 10% heat-inactivated horse serum (HIHS) and 0.71% iron solution for 2 days at 35°C in a microaerophilic atmosphere to produce this lot.

Lot: 70068923

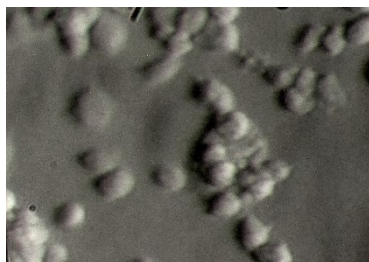
Manufacturing Date: 17JUL2024

TEST	SPECIFICATIONS	RESULTS
Cell Morphology¹ 2 days at 35°C in a microaerophilic atmosphere in a modified TYM medium supplemented with 10% HIHS and 0.71% iron	Report results	Ovoid-to-round in clumps; overall granular appearance (Figure 1)
Genotypic Analysis² Sequencing of 18S ribosomal RNA gene (~ 1450 base pairs)	Consistent with <i>T. vaginalis</i>	Consistent with <i>T. vaginalis</i>
Viable Cell Count by Hemacytometry²	> 10 ⁶ cells/mL	8.7 × 10 ⁶ cells/mL
Viability¹ 2 days at 35°C in a microaerophilic atmosphere in modified TYM medium supplemented with 10% HIHS and 0.71% iron	Growth	Growth
Sterility (14-day incubation)¹ Trypticase soy broth, 37°C and 26°C, aerobic Sabouraud broth, 37°C and 26°C, aerobic Sheep blood agar, 37°C, aerobic Sheep blood agar, 37°C, anaerobic Thioglycollate broth, 37°C, anaerobic	No growth No growth No growth No growth No growth	No growth No growth No growth No growth No growth

¹Testing completed on vial, post-freeze material.

²Testing completed on bulk material prior to vialing and freezing.

Figure 1: Cell Morphology



/Sonia Bjorum Brower/

Sonia Bjorum Brower

12 MAR 2026

Technical Manager or designee, ATCC Federal Solutions

ATCC®, on behalf of BEI Resources, hereby represents and warrants that the material provided under this certificate has been subjected to the tests and procedures specified and that the results described, along with any other data provided in this certificate, are true and accurate to the best of ATCC®'s knowledge.

ATCC® is a trademark of the American Type Culture Collection.

You are authorized to use this product for research use only. It is not intended for human use.

