

Monoclonal Anti-*Clostridium botulinum* Neurotoxin Type A Light Chain, Clone 2F7.3 (immunoglobulin M, Mouse)

Catalog No. NR-3830

Product Description: Antibody Class: IgM κ

Mouse monoclonal antibody to the light chain of *Clostridium botulinum* neurotoxin type A was purified by mannan-binding protein affinity chromatography from a mouse hybridoma clonal cell line (Clone 2F7.3).

Lot: 57606522

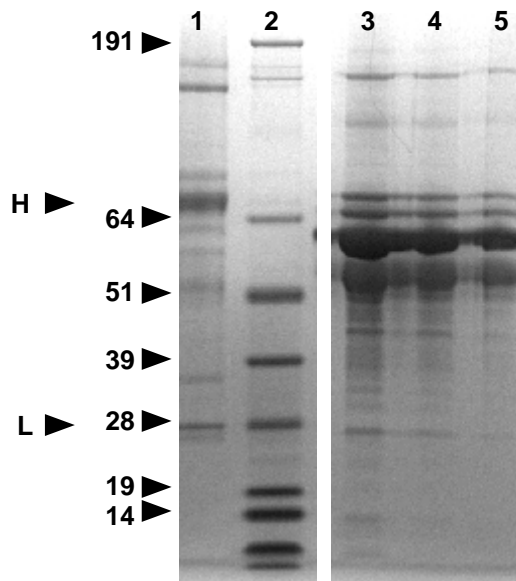
Manufacturing Date: 16OCT2007

TEST	SPECIFICATIONS	RESULTS
Antibody Class	Report results	IgM κ
SDS-PAGE (Coomassie Blue Stain)	Report results	Figure 1
Concentration by Mouse IgM ELISA ¹	Report results	0.94 mg/mL
Sodium Azide Content	Report results	0.02%

¹Mouse IgM ELISA Quantitation kit from Bethyl Laboratories, Inc (E90-101).

Figure 1. SDS-PAGE of NR-3830.

Lane 1: 7 μ g of purified mouse IgM (Zymed)
 Lane 2: SeeBlue[®] Pre-stained Standard (Invitrogen)
 Lane 3: 28 μ L (diluted 1:10)
 Lane 4: 14 μ L (diluted 1:10)
 Lane 5: 7 μ L (diluted 1:10)
 H and L refer to heavy and light chains, respectively.



Date: 12 JAN 2009

Signature: Signature on File

Title: Technical Manager, BEI Authentication or designee

ATCC[®], on behalf of BEI Resources, hereby represents and warrants that the material provided under this certificate has been subjected by the contributor and ATCC[®] to the tests and procedures specified and that the results described, along with any other data provided in this certificate, are true and accurate to the best of ATCC[®]'s knowledge.

ATCC[®] is a trademark of the American Type Culture Collection.

You are authorized to use this product for research use only. It is not intended for human use.



Biodefense and Emerging Infections Research Resources Repository

P.O. Box 4137
 Manassas, VA 20108-4137 USA
www.beiresources.org

800-359-7370
 Fax: 703-365-2898
 E-mail: contact@beiresources.org