

Vector pLNCX2 Containing HLA-A*0205 Allele

Catalog No. NR-2781

Product Description: The HLA-A*0205 allele from a human Major Histocompatibility Complex (MHC) Class I human leukocyte antigen (HLA)-homozygous human B-lymphoblastoid cell line (B-LCL) was amplified by PCR, gel purified, and cloned into the Clontech Laboratories vector, pLNCX2 by the International Histocompatibility Working Group (IHWG). The plasmid was produced in *Escherichia coli* and extracted, as described below.¹

Lot¹: 58304227

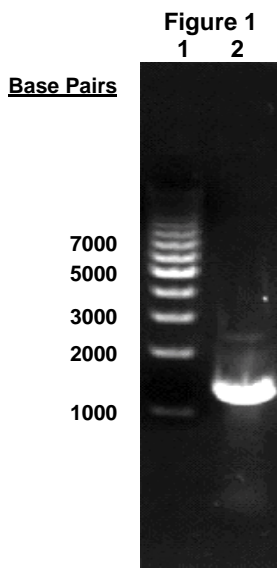
Manufacturing Date: 14OCT2008

TEST	SPECIFICATIONS	RESULTS
PCR Amplification and Sequencing of HLA Insert	~ 1100 bp amplicon Consistent with HLA-A*0205	~ 1100 bp amplicon (Figure 1) Consistent with HLA-A*0205
Agarose Gel Electrophoresis Digestion with <i>HindIII</i> ² and <i>NotI</i> ³	~ 6100 bp vector; ~ 1100 bp insert	~ 6100 bp vector; ~ 1100 bp insert (Figure 2)
PicoGreen[®] Measurement DNA content DNA concentration	Report results Report results	36 ng 36 ng in 40 µL per vial (0.9 µg/mL)
Effective Bacterial Transformation	≥ 100 colonies per ng	≥ 100 colonies per ng

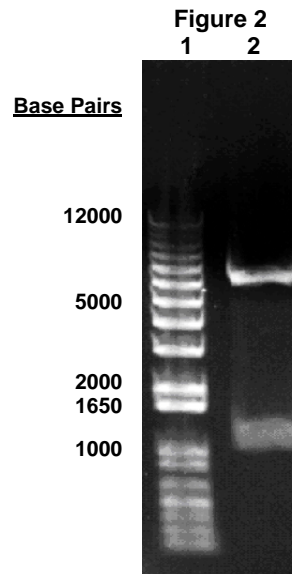
¹Produced in One Shot[®] MAX Efficiency[®] DH5α™-T1^R cells (Invitrogen™ 12297-016) and extracted using the EndoFree[®] Plasmid Maxi Kit (QIAGEN[®] 12362)

²*HindIII* (New England BioLabs, Inc. R0104S)

³*NotI* (New England BioLabs, Inc. R0189S)



Lane 1: BioRad EZ Load 1 kb Molecular Ruler
 Lane 2: PCR Amplicon of HLA Insert



Lane 1: Invitrogen TrackIt™ 1 Kb Plus DNA Ladder
 Lane 2: NR-2780 digested with *HindIII* and *NotI*

Date: 19 FEB 2009

Signature: Signature on File

Title: Technical Manager, BEI Authentication or designee

ATCC[®], on behalf of BEI Resources, hereby represents and warrants that the material provided under this certificate has been subjected to the tests and procedures specified and that the results described, along with any other data provided in this certificate, are true and accurate to the best of ATCC[®]'s knowledge.

ATCC[®] is a trademark of the American Type Culture Collection.

You are authorized to use this product for research use only. It is not intended for human use.

