

**Genomic DNA from *Bacillus samanii*, Strain C1**

**Catalog No. NR-12239**

**Product Description:** Genomic DNA was isolated from a preparation of *Bacillus samanii* (*B. samanii*), strain C1. The spore-forming *B. samanii*, strain C1 was isolated from soil covered with clean snow in a secluded area of the Massbay College, Wellesley campus college grounds in February 2006.

**Lot<sup>1</sup>: 58454016**

**Manufacturing Date: 17MAR2009**

TEST	SPECIFICATIONS	RESULTS
<b>Sequencing of 16S Ribosomal RNA Gene</b> (~ 1430 bp)	Identical to BEI Resources NR-4056 Consistent with <i>B. samanii</i>	Identical to BEI Resources NR-4056 Consistent with <i>B. samanii</i> <sup>2</sup>
<b>Agarose Gel Electrophoresis</b>	High molecular weight chromosomal DNA	High molecular weight chromosomal DNA (Figure 1)
<b>Content by PicoGreen<sup>®</sup> Measurement</b>	4 to 6 µg in 25 to 100 µL per vial	5.6 µg in 87 µL per vial (64 µg/mL)
<b>Functional Activity by PCR Amplification</b> 16S ribosomal RNA gene	~ 1500 bp amplicon	~ 1500 bp amplicon
<b>OD<sub>260</sub>/OD<sub>280</sub> Ratio</b>	1.7 to 1.9	1.8
<b>Bacterial Inactivation</b> 10% of total yield plated on Tryptic Soy Agar <sup>3,4</sup>	No viable bacteria detected	No viable bacteria detected

<sup>1</sup>The bacterial preparation used for extraction of genomic DNA was produced by broth (Tryptic Soy Broth; BD 211768) culture of the deposited material. After incubation for 24 hours at 37°C and aerobic atmosphere, genomic DNA was extracted using proprietary technology.

<sup>2</sup>Also consistent with *B. pseudomycooides* and the *B. cereus* group which includes species *B. cereus*, *B. thuringiensis*, *B. mycooides*, and *B. anthracis*. *B. samanii* cannot be classified based on 16S sequence (Spencer, R. C. "Bacillus anthracis." J. Clin. Pathol. 56 (2003): 182-187. PubMed: 12610093).

<sup>3</sup>7 days at 37°C in an aerobic atmosphere.

<sup>4</sup>An extraction procedure was used that has been shown to consistently inactivate 100% of Gram-negative bacteria.

**Date:** 13 JUL 2009

**Signature:** Signature on File

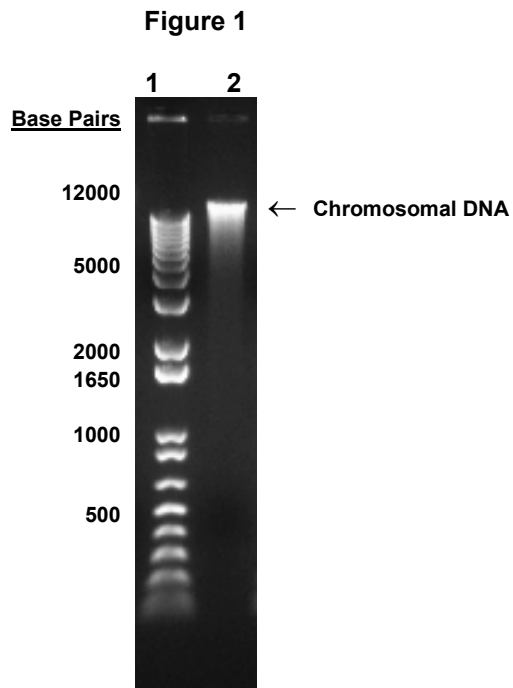
**Title:** Technical Manager, BEI Authentication or designee

ATCC<sup>®</sup>, on behalf of BEI Resources, hereby represents and warrants that the material provided under this certificate has been subjected to the tests and procedures specified and that the results described, along with any other data provided in this certificate, are true and accurate to the best of ATCC<sup>®</sup>'s knowledge.

ATCC<sup>®</sup> is a trademark of the American Type Culture Collection.

You are authorized to use this product for research use only. It is not intended for human use.





Lane 1: Invitrogen™ TrackIt™ 1 Kb Plus DNA Ladder  
Lane 2: 200 ng of NR-12239