

**Plasmid pMRLB.5 Containing Gene Rv3841 (Protein BfrB) from *Mycobacterium tuberculosis***

**Catalog No. NR-13278**

This reagent is the tangible property of the U.S. Government.

**Product Description:** NR-13278 is a recombinant expression vector containing *Mycobacterium tuberculosis* gene Rv3841, which encodes a probable bacterioferritin protein BfrB. Gene Rv3841 was amplified by PCR and cloned into pET23b for expression in *Escherichia coli*.

**Lot: 03.EC.05.28**

**Manufacturing Date: 28MAY2009**

TEST	SPECIFICATIONS	RESULTS
<b>Agarose Gel Electrophoresis (see attached QC Gel)<sup>1</sup></b> Linearization with <i>NdeI</i> Digestion with <i>NdeI</i> and <i>HindIII</i>	~ 4.2 kb ~ 0.543 kb (insert); ~ 3.66 kb (vector)	~ 4.2 kb ~ 0.543 kb; ~ 3.66 kb
<b>Concentration by OD<sub>260</sub></b>	Report results	0.1 µg/µL
<b>Absorbance Ratio (OD<sub>260</sub>/OD<sub>280</sub>)</b>	Report results	1.8

<sup>1</sup>Performed by Colorado State University under the TB Vaccine Testing and Research Materials Contract (NIH)

**Date:** 31 AUGUST 2009

**Signature:** Signature on File

**Title:** Technical Manager, BEI Authentication or designee

ATCC<sup>®</sup>, on behalf of BEI Resources, hereby represents and warrants that the material provided under this certificate has been subjected by the contractor to the tests and procedures specified and that the results described, along with any other data provided in this certificate, are true and accurate to the best of ATCC<sup>®</sup>'s knowledge.

ATCC<sup>®</sup> is a trademark of the American Type Culture Collection.

You are authorized to use this product for research use only. It is not intended for human use.



QC gel

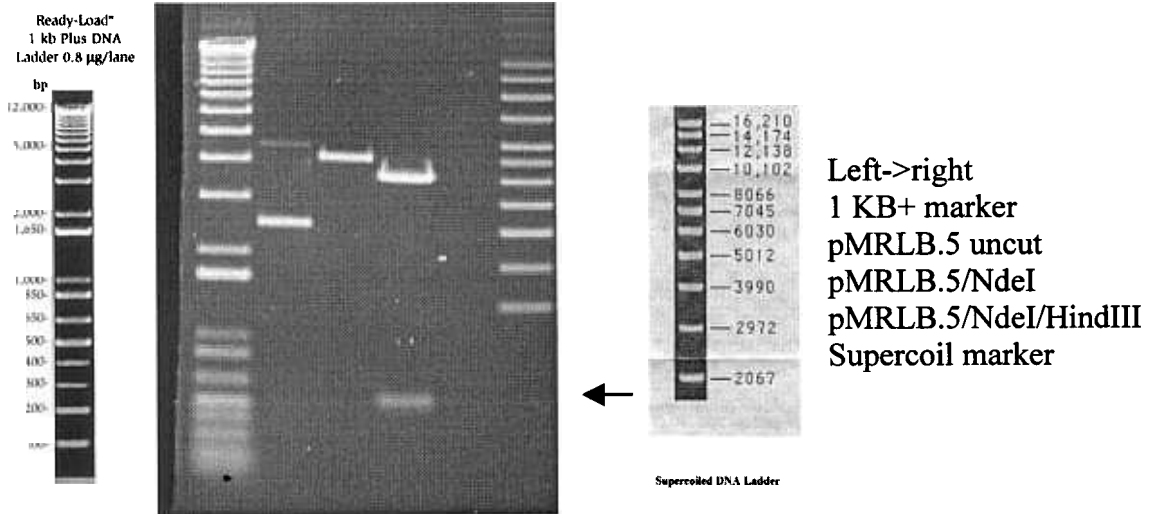
Restriction enzymes used in QC analysis NdeI, HindIII

Expected size of restriction fragments

Vector 3.66 kb pET 23b  
Insert 0.543 kb bfrB  
Other 4.20 kb linearized plasmid

Gel description file number, % agarose, buffer kb46/0.8% agarose/1X TAE

Molecular weight markers Invitrogen 1KB Plus, Invitrogen Supercoiled DNA Ladder



Generated by

Terry Brostman

Supervisor

John T. Bell 6-30-03

Form 4.2.03.JB