

Plasmid pMRLB.28 Containing Gene Rv2626c from *Mycobacterium tuberculosis*

Catalog No. NR-13290

This reagent is the tangible property of the U.S. Government.

Product Description: NR-13290 is a recombinant expression vector containing *Mycobacterium tuberculosis* gene Rv2626c. Gene R2626c was amplified by PCR and cloned into pET23b for expression in *Escherichia coli*.

Lot: 04.EC.10.20

Manufacturing Date: 20OCT2004

TEST	SPECIFICATIONS	RESULTS
Agarose Gel Electrophoresis (see attached QC Gel)¹ Linearization with <i>NdeI</i> Linearization with <i>HindIII</i> Linearization with <i>SmaI</i> Digestion with <i>NdeI</i> and <i>HindIII</i>	~ 4.10 kb ~ 4.10 kb ~ 4.10 kb ~ 0.431 kb (insert); ~ 3.66 kb (vector)	~ 4.10 kb ~ 4.10 kb ~ 4.10 kb ~ 0.431 kb; ~ 3.66 kb
Concentration by OD₂₆₀	Report results	0.09 µg/µL
Absorbance Ratio (OD₂₆₀/OD₂₈₀)	Report results	1.95

¹Performed by Colorado State University under the TB Vaccine Testing and Research Materials Contract (NIH)

Date: 31 AUGUST 2009

Signature: Signature on File

Title: Technical Manager, BEI Authentication or designee

ATCC®, on behalf of BEI Resources, hereby represents and warrants that the material provided under this certificate has been subjected by the contractor to the tests and procedures specified and that the results described, along with any other data provided in this certificate, are true and accurate to the best of ATCC®'s knowledge.

ATCC® is a trademark of the American Type Culture Collection.

You are authorized to use this product for research use only. It is not intended for human use.



QC gel

Restriction enzymes used in QC analysis:

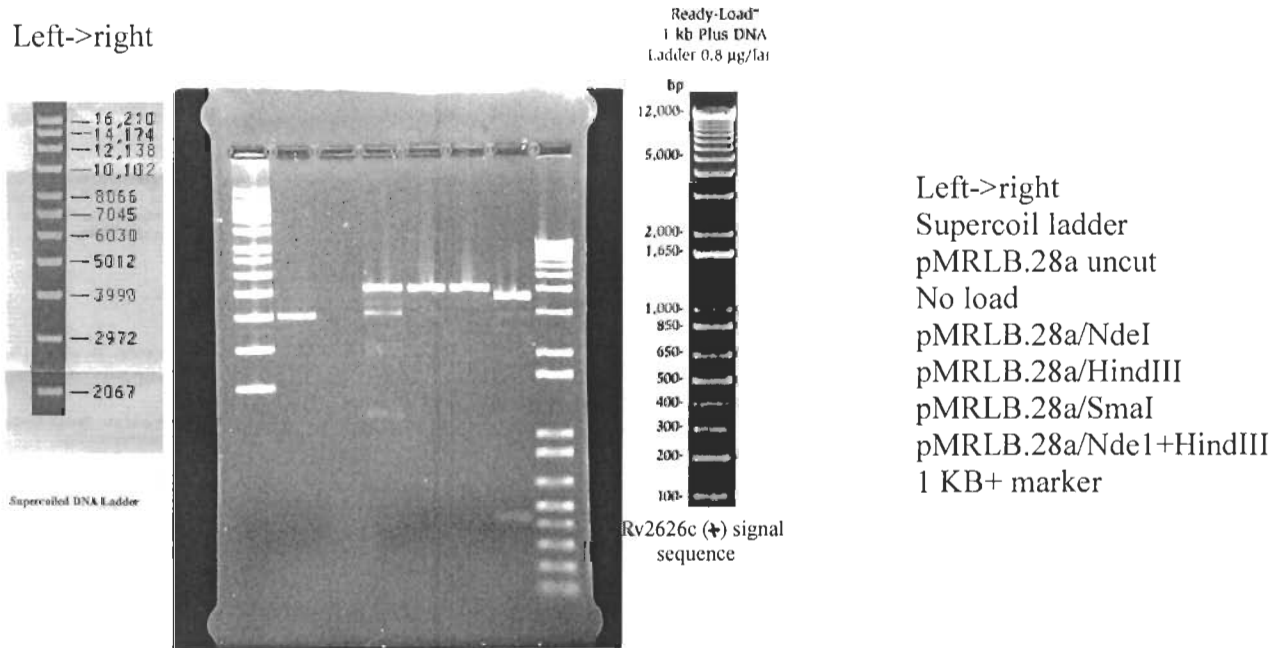
NdeI & HindIII (cloning), SmaI (insert diagnostic – 1 site in 2626c)

Expected size of restriction fragments

Vector 3.66 kb pET23b + NdeI +HindIII
Insert 0.431 kb Rv2626c + NdeI +HindIII
Other 4.10 kb linearized plasmid – NdeI,HindIII,SmaI single digests

Gel description (file number, % agarose, buffer) lmwRec1#4 pp26, 1%, 1X TAE
Molecular weight markers Invitrogen 1KB Plus, Invitrogen Supercoiled DNA Ladder

Left->right



Generated by *Lindel* Date 11/16/04
Supervisor *M. B. B.* Date 11/20/04

Form 4.2.03.JB