

Plasmid pMRLB.48 Containing Gene Rv2032 (Protein Acg) from *Mycobacterium tuberculosis*

Catalog No. NR-13299

This reagent is the tangible property of the U.S. Government.

Product Description: NR-13299 is a recombinant expression vector containing *Mycobacterium tuberculosis* gene Rv2032, which encodes a conserved hypothetical protein, Acg. Gene Rv2032 was amplified by PCR and cloned into pET23b for expression in *Escherichia coli*.

Lot: 04.EC.12.10

Manufacturing Date: 10DEC2004

TEST	SPECIFICATIONS	RESULTS
Agarose Gel Electrophoresis (see attached QC Gel)¹ Linearization with <i>NdeI</i> Linearization with <i>SacI</i> Linearization with <i>XhoI</i> Digestion with <i>NdeI</i> and <i>HindIII</i>	~ 4.58 kb ~ 4.58 kb ~ 4.58 kb ~ 0.995 kb (insert); ~ 3.59 kb (vector)	~ 4.58 kb ~ 4.58 kb ~ 4.58 kb ~ 0.995 kb; ~ 3.59 kb
Concentration by OD₂₆₀	Report results	0.1 µg/mL
Absorbance Ratio (OD₂₆₀/OD₂₈₀)	Report results	1.9

¹Performed by Colorado State University under the TB Vaccine Testing and Research Materials Contract (NIH)

Date: 31 AUGUST 2009

Signature: Signature on File

Title: Technical Manager, BEI Authentication or designee

ATCC®, on behalf of BEI Resources, hereby represents and warrants that the material provided under this certificate has been subjected by the contractor to the tests and procedures specified and that the results described, along with any other data provided in this certificate, are true and accurate to the best of ATCC®'s knowledge.

ATCC® is a trademark of the American Type Culture Collection.

You are authorized to use this product for research use only. It is not intended for human use.



QC gel

Restriction enzymes used in QC analysis:

NdeI & XhoI (cloning), SacII (insert diagnostic – 1 site in 2032)

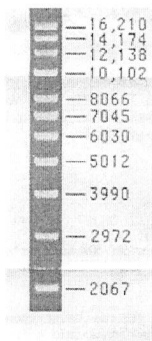
Expected size of restriction fragments

Vector 3.59 kb pET23b + NdeI +XhoI
Insert 0.995 Rv2032 + NdeI +XhoI
Other 4.58kb linearized plasmid – NdeI,XhoI,SacII single digests

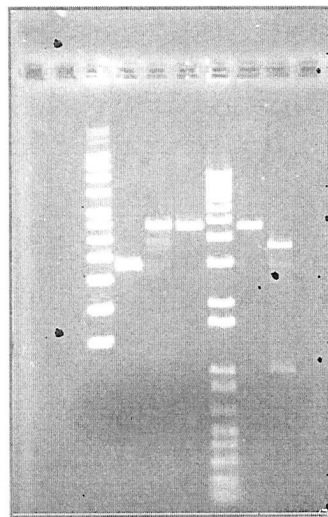
Gel description (file number, % agarose, buffer) lmwRec1#11pp59, 1%, 1X TAE

Molecular weight markers Invitrogen 1KB Plus, Invitrogen Supercoiled DNA Ladder

Left->right

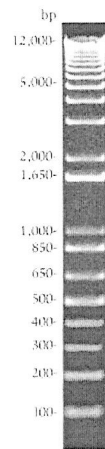


Supercoiled DNA Ladder



Rv2032 (-) signal sequence

Ready-Load™
1 kb Plus DNA
Ladder 0.8 µg/lar



Left->right
Supercoil ladder
pMRLB48.Rv2032 uncut
pMRLB48.Rv2032/NdeI
pMRLB48.Rv2032/SacII
1Kb+ ladder
pMRLB48.Rv2032/XhoI
pMRLB48.Rv2032/NdeI+XhoI

Revised

Generated by *Frank J. Thompson* Date 07/31/09

Supervisor *[Signature]* Date 07/31/2009