

Polyclonal Anti-*Escherichia coli* Intimin Gamma (immunoglobulin G, Rabbit)

Catalog No. NR-12194

This reagent is the tangible property of the U.S. Government.

Product Description:

Antibody Class: IgG

Polyclonal antiserum to the intimin gamma protein of *Escherichia coli* was produced in rabbits and purified by protein G affinity chromatography.

Lot: 58408293

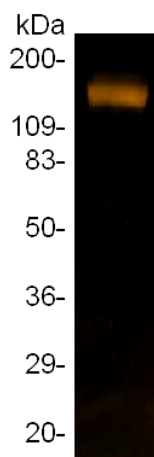
Manufacturing Date: 10FEB2009

TEST	SPECIFICATIONS	RESULTS
Appearance	Clear and colorless	Clear and colorless
SDS-PAGE (SYPRO Orange densitometer scan)	IgG band represents > 95% of total staining intensity	IgG band represents > 98% of total staining intensity (Figure 1)
Concentration by Bicinchoninic Acid Protein Assay	Report results	1.1 mg/mL
Functional Activity Western Blot ¹ (Figure 2) Intimin gamma, carboxy terminus Carbonic anhydrase ELISA titer ² (Figure 3) Intimin gamma, carboxy terminus Carbonic anhydrase	Reactive Not reactive Report results Not reactive	Reactive Not reactive ≥ 1:12800 Not reactive
Sterility	0.22 µm filter-sterilized	0.22 µm filter-sterilized

¹A dilution of 1:1000 of NR-12194 is recommended.

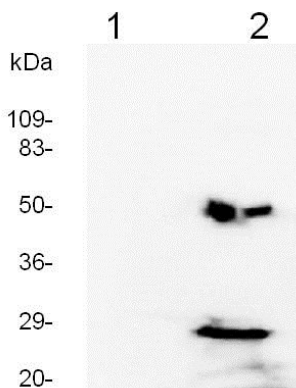
²A dilution of 1:3200 of NR-12194 is recommended.

Figure 1



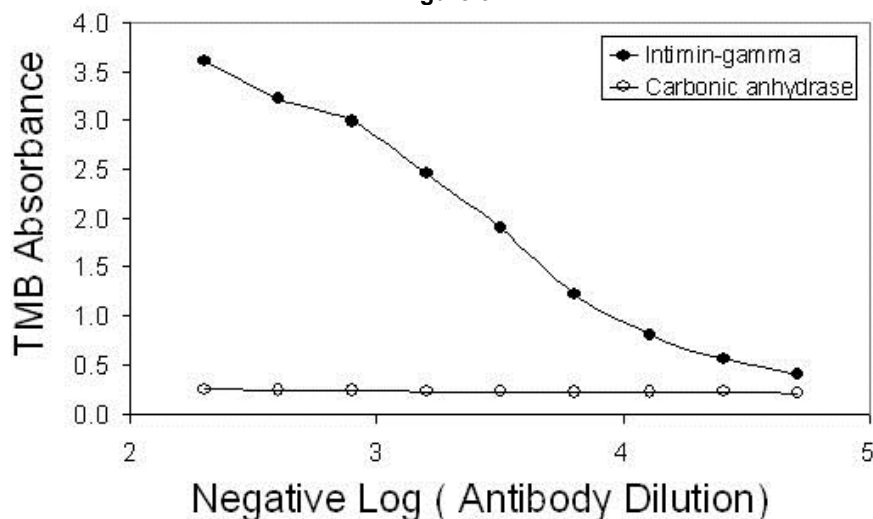
Certificate of Analysis for NR-12194

Figure 2



Lane 1: Carbonic anhydrase
Lane 2: Intimin gamma, carboxy terminus

Figure 3



Date: 17 DEC 2014

Signature:

Title:

Technical Manager, BEI Authentication or designee

ATCC®, on behalf of BEI Resources, hereby represents and warrants that the material provided under this certificate has been subjected by the contractor to the tests and procedures specified and that the results described, along with any other data provided in this certificate, are true and accurate to the best of ATCC®'s knowledge.

ATCC® is a trademark of the American Type Culture Collection.

You are authorized to use this product for research use only. It is not intended for human use.



Biodefense and Emerging Infections Research Resources Repository

P.O. Box 4137

Manassas, VA 20108-4137 USA

www.beiresources.org

800-359-7370

Fax: 703-365-2898

E-mail: contact@beiresources.org