

Vector pLNCX2 Containing HLA-A*0206 Allele

Catalog No. NR-2782

Product Description: The HLA-A*0206 allele from a human Major Histocompatibility Complex (MHC) Class I human leukocyte antigen (HLA)-homozygous human B-lymphoblastoid cell line (B-LCL) was amplified by PCR, gel purified, and cloned into the Clontech Laboratories vector, pLNCX2 by the International Histocompatibility Working Group (IHWG). The plasmid was produced in *Escherichia coli* and extracted.¹

Lot¹: 58304228

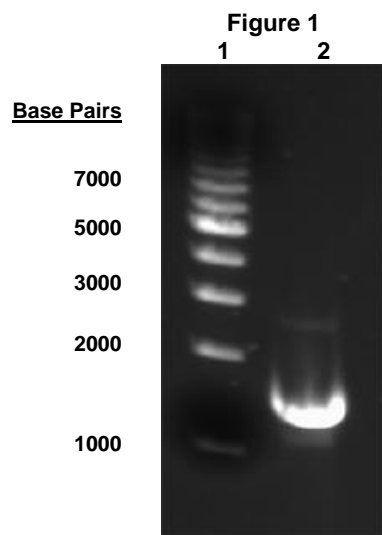
Manufacturing Date: 14AUG2009

TEST	SPECIFICATIONS	RESULTS
PCR Amplification and Sequencing of HLA Insert	~ 1100 bp amplicon Human MHC Class I HLA-A	~ 1100 bp amplicon (Figure 1) Human MHC Class I HLA-A
Agarose Gel Electrophoresis Digestion with <i>HindIII</i> ² and <i>NotI</i> ³	~ 6100 bp vector; ~ 1100 bp insert	~ 6100 bp vector; ~ 1100 bp insert (Figure 2)
PicoGreen[®] Measurement DNA content DNA concentration	20 to 50 ng Report results	30 ng 30 ng per 100 µL (0.3 µg per mL)
Effective Bacterial Transformation	≥ 100 colonies per ng	≥ 100 colonies per ng

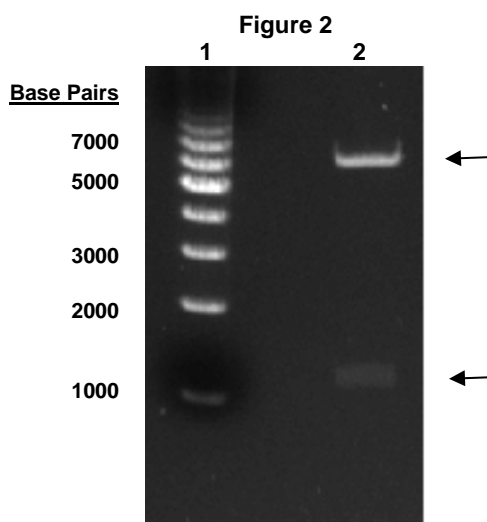
¹Produced in *Escherichia coli* DH5α™-T1^R cells (Invitrogen™ 12297-016) and extracted using the EndoFree[®] Plasmid Maxi Kit (QIAGEN[®] 12362)

²*HindIII* (New England BioLabs, Inc. R0104)

³*NotI* (New England BioLabs, Inc. R0189)



Lane 1: BioRad EZ Load 1 kb Molecular Ruler
Lane 2: PCR Amplicon of HLA Insert



Lane 1: BioRad EZ Load 1 kb Molecular Ruler
Lane 2: NR-2782 digested with *HindIII* and *NotI*

Date: 08 JAN 2010

Signature: Signature on File

Title: Technical Manager, BEI Authentication or designee

ATCC[®], on behalf of BEI Resources, hereby represents and warrants that the material provided under this certificate has been subjected to the tests and procedures specified and that the results described, along with any other data provided in this certificate, are true and accurate to the best of ATCC[®]'s knowledge.

ATCC[®] is a trademark of the American Type Culture Collection.

You are authorized to use this product for research use only. It is not intended for human use.

