

**Vector pLNCX Containing HLA-B\*0702 Allele**

**Catalog No. NR-2795**

**Product Description:** The HLA-B\*0702 allele from a human Major Histocompatibility Complex (MHC) Class I human leukocyte antigen (HLA)-homozygous human B-lymphoblastoid cell line (B-LCL) was amplified by PCR, gel purified, and cloned into the Clontech Laboratories vector, pLNCX by the International Histocompatibility Working Group (IHWG). The plasmid was produced in *Escherichia coli* and extracted.<sup>1</sup>

**Lot<sup>1</sup>: 58819340**

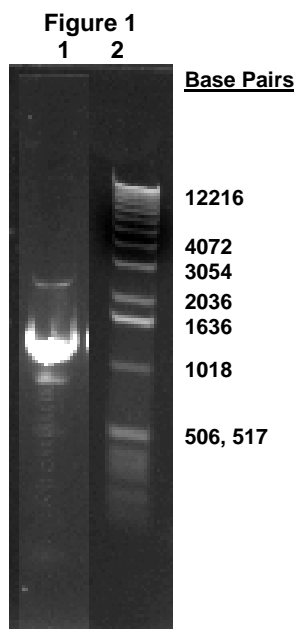
**Manufacturing Date: 03DEC2009**

TEST	SPECIFICATIONS	RESULTS
<b>PCR Amplification and Sequencing of HLA Insert</b>	~ 1300 bp amplicon Human MHC Class I HLA-B	~ 1300 bp amplicon (Figure 1) Human MHC Class I HLA-B
<b>Agarose Gel Electrophoresis</b> Digestion with <i>HindIII</i> <sup>2</sup> and <i>Clal</i> <sup>3</sup>	~ 6600 bp vector; ~ 1200 bp insert	~ 6600 bp vector; ~ 1200 bp insert (Figure 2)
<b>PicoGreen<sup>®</sup> Measurement</b> DNA content DNA concentration	20 to 50 ng Report results	41 ng 0.41 ng per $\mu$ L (0.41 $\mu$ g per mL)
<b>Effective Bacterial Transformation</b>	$\geq$ 100 colonies per ng	$\geq$ 100 colonies per ng

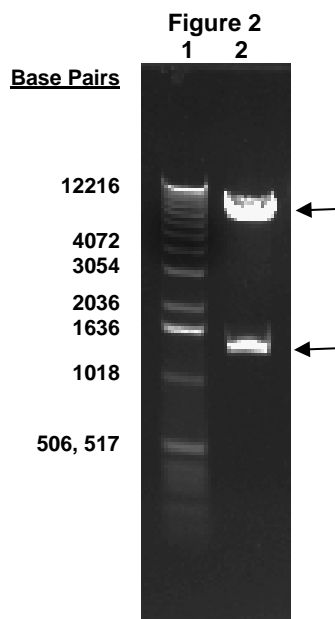
<sup>1</sup>Produced in *Escherichia coli* DH5 $\alpha$ ™-T1<sup>R</sup> cells (Invitrogen™ 12297-016) and extracted using the EndoFree<sup>®</sup> Plasmid Maxi Kit (QIAGEN<sup>®</sup> 12362)

<sup>2</sup>*HindIII* (New England BioLabs, Inc. R0104)

<sup>3</sup>*Clal* (New England BioLabs, Inc. R0197)



Lane 1: PCR Amplicon of HLA Insert  
Lane 2: Invitrogen™ TrackIt™ 1 Kb DNA Ladder



Lane 1: Invitrogen™ TrackIt™ 1 Kb DNA Ladder  
Lane 2: NR-2795 digested with *HindIII* and *Clal*

**Date:** 28 JAN 2010

**Signature:** Signature on File

**Title:** Technical Manager, BEI Authentication or designee

ATCC<sup>®</sup>, on behalf of BEI Resources, hereby represents and warrants that the material provided under this certificate has been subjected to the tests and procedures specified and that the results described, along with any other data provided in this certificate, are true and accurate to the best of ATCC<sup>®</sup>'s knowledge.

ATCC<sup>®</sup> is a trademark of the American Type Culture Collection.

You are authorized to use this product for research use only. It is not intended for human use.

