

Vector pLNCX Containing HLA-B*1501 Allele

Catalog No. NR-2797

Product Description: The HLA-B*1501 allele from a human Major Histocompatibility Complex (MHC) Class I human leukocyte antigen (HLA)-homozygous human B-lymphoblastoid cell line (B-LCL) was amplified by PCR, gel purified, and cloned into the Clontech Laboratories vector, pLNCX by the International Histocompatibility Working Group (IHWG). The plasmid was produced in *Escherichia coli* and extracted.¹

Lot¹: 58881045

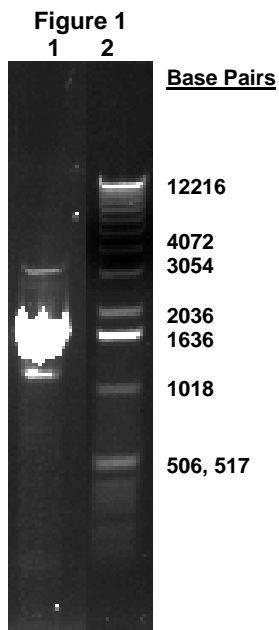
Manufacturing Date: 29OCT2009

TEST	SPECIFICATIONS	RESULTS
PCR Amplification and Sequencing of HLA Insert	~ 1300 bp amplicon Human MHC Class I HLA-B	~ 1300 bp amplicon (Figure 1) Human MHC Class I HLA-B
Agarose Gel Electrophoresis Digestion with <i>HindIII</i> ² and <i>ClaI</i> ³	~ 6600 bp vector; ~ 1200 bp insert	~ 6600 bp vector; ~ 1200 bp insert (Figure 2)
PicoGreen[®] Measurement DNA content DNA concentration	20 to 50 ng Report results	44 ng 0.44 ng per µL (0.44 µg per mL)
Effective Bacterial Transformation	≥ 100 colonies per ng	≥ 100 colonies per ng

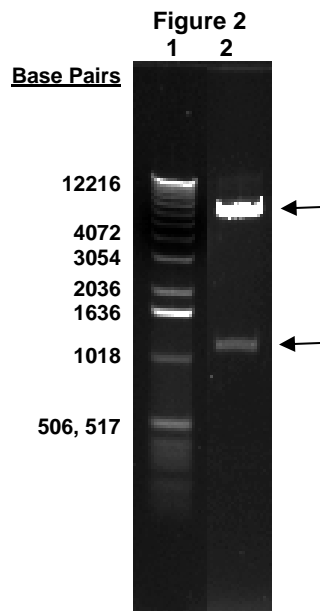
¹Produced in *Escherichia coli* DH5α™-T1^R cells (Invitrogen™ 12297-016) and extracted using the EndoFree[®] Plasmid Maxi Kit (QIAGEN[®] 12362)

²*HindIII* (New England BioLabs, Inc. R0104)

³*ClaI* (New England BioLabs, Inc. R0197)



Lane 1: PCR Amplicon of HLA Insert
Lane 2: Invitrogen™ TrackIt™ 1 Kb DNA Ladder



Lane 1: Invitrogen™ TrackIt™ 1 Kb DNA Ladder
Lane 2: NR-2797 digested with *HindIII* and *ClaI*

Date: 28 JAN 2010

Signature: Signature on File

Title: Technical Manager, BEI Authentication or designee

ATCC[®], on behalf of BEI Resources, hereby represents and warrants that the material provided under this certificate has been subjected to the tests and procedures specified and that the results described, along with any other data provided in this certificate, are true and accurate to the best of ATCC[®]'s knowledge.

ATCC[®] is a trademark of the American Type Culture Collection.

You are authorized to use this product for research use only. It is not intended for human use.

