

Diarrheagenic *Escherichia coli* 12-Target Multiplex PCR for Virulence Typing Assay

Catalog No. NR-13439

Product Description: NR-13439 is designed to detect 12 of the virulence genes (CVD432, *eaeA*, *aggR*, *stx2*, *stx1*, *invE*, *elt*, *bfpA*, *esth*, EAF, *estp* and *astA*) associated with diarrheagenic *Escherichia coli* (*E. coli*) pathotypes.

Lot: 58630891

Manufacturing Date: 29JUN2009

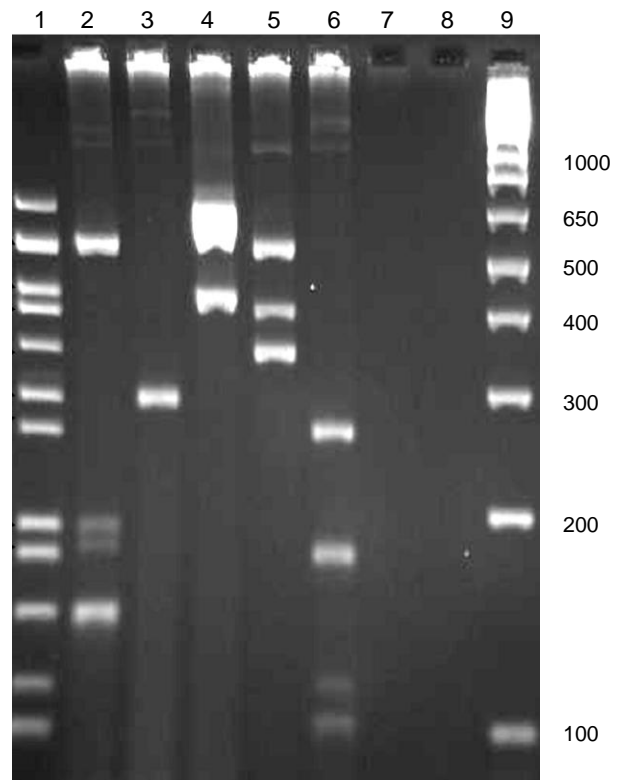
TEST	SPECIFICATIONS	RESULTS
PCR Amplification and Specificity^{1,2} (Figure 1) NR-3050 (EPEC template), Lane 2 NR-3051 (EIEC template), Lane 3 NR-3052 (EAEC template), Lane 4 NR-2648 (EHEC template), Lane 5 NR-2647 (ETEC template), Lane 6 NR-2656 (UPEC negative control template), Lane 7 No template, Lane 8	<i>eaeA</i> , <i>bfpA</i> , EAF <i>invE</i> CVD432, <i>aggR</i> <i>eaeA</i> , <i>stx1</i> , <i>stx2</i> <i>elt</i> , <i>esth</i> , <i>estp</i> , <i>astA</i> No amplicons No amplicons	<i>eaeA</i> , <i>bfpA</i> , EAF <i>invE</i> CVD432, <i>aggR</i> <i>eaeA</i> , <i>stx1</i> , <i>stx2</i> <i>elt</i> , <i>esth</i> , <i>estp</i> , <i>astA</i> No amplicons No amplicons

¹Genomic DNAs were amplified using NRC-2200.

²The primers for CVD 432, *aggR*, *bfpA*, *esth*, EAF and *astA* are described in Kimata, K., et al. "Rapid Categorization of Pathogenic *Escherichia coli* by Multiplex PCR." *Microbiol. Immunol.* 49 (2005): 485-492. PubMed: 15965295.

Figure 1: Diarrheagenic *E. coli* 12-Target Multiplex PCR for Virulence Typing Assay

Lane 1: Virulence Target Ladder (NRC-2187)	CVD432 (632 bp)
Lane 2: NR-3050 (EPEC template)	<i>eaeA</i> (526 bp)
Lane 3: NR-3051 (EIEC template)	
Lane 4: NR-3052 (EAEC template)	<i>aggR</i> (438 bp)
Lane 5: NR-2648 (EHEC template)	<i>stx2</i> (403 bp)
Lane 6: NR-2647 (ETEC template)	<i>stx1</i> (348 bp)
Lane 7: NR-2656 (UPEC negative control template)	
Lane 8: No template	
Lane 9: Invitrogen™ 1Kb Plus DNA Ladder™	<i>invE</i> (292 bp)
	<i>elt</i> (262 bp)
	<i>bfpA</i> (197 bp)
	<i>esth</i> (180 bp)
	EAF (152 bp)
	<i>estp</i> (121 bp)
	<i>astA</i> (106 bp)



Date: 16 FEB 2010

Signature: Signature on File

Title: Technical Manager, BEI Authentication or designee

ATCC®, on behalf of BEI Resources, hereby represents and warrants that the material provided under this certificate has been subjected to the tests and procedures specified and that the results described, along with any other data provided in this certificate, are true and accurate to the best of ATCC®'s knowledge.

ATCC® is a trademark of the American Type Culture Collection.

You are authorized to use this product for research use only. It is not intended for human use.

