

Staphylococcus aureus, Strain HFH-30008

Catalog No. NR-10193

Product Description: *Staphylococcus aureus* (*S. aureus*), strain HFH-30008 was isolated from human sputum and is a community associated methicillin-resistant *S. aureus* (MRSA) strain. NR-10193 is negative for the Panton-Valentine leucocidin virulence factor and contains staphylococcal chromosome cassette *mec* type II.

Lot¹: 58325725

Manufacturing Date: 23SEP2009

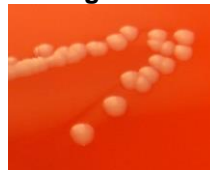
TEST	SPECIFICATIONS	RESULTS
Phenotypic Analysis Cellular morphology Colony morphology ² Oxacillin resistance Hemolysis on blood agar Motility Biochemical Analyses Analytical profile index (API Staph [®]) Catalase	Gram-positive cocci Report results Resistant Report results Non-motile Consistent with <i>S. aureus</i> Positive	Gram-positive cocci Circular, convex, entire, opaque and light gray (Figure 1) Resistant Negative Non-motile Consistent with <i>S. aureus</i> Positive
Genotypic Analysis³ Sequencing of 16S ribosomal RNA gene (~ 1400 bp)	Consistent with <i>S. aureus</i>	Consistent with <i>S. aureus</i>
PCR Assay of Extracted DNA³ 16S ribosomal RNA gene	~ 1500 bp amplicon	~ 1500 bp amplicon
Viability (post-freeze)²	Growth	Growth

¹*S. aureus*, strain HFH-30008 was deposited by Dr. Marcus Zervos, Division Head of Infectious Disease, Henry Ford Hospital, Department of Internal Medicine, Detroit, Michigan. NR-10193 was produced by inoculation of the deposited material into Brain Heart Infusion Broth (BD 237500) and grown 24 hours at 37°C. Broth inoculum was added to Kolles which were grown 24 hours at 37°C to produce this lot.

²24 hours at 37°C and aerobic atmosphere on Tryptic Soy Agar with 5% sheep blood

³DNA was extracted from a broth culture produced from NR-10193, lot 58325725

Figure 1



Date: 16 MAR 2010

Signature: Signature on File

Title: Technical Manager, BEI Authentication or designee

ATCC[®], on behalf of BEI Resources, hereby represents and warrants that the material provided under this certificate has been subjected to the tests and procedures specified and that the results described, along with any other data provided in this certificate, are true and accurate to the best of ATCC[®]'s knowledge.

ATCC[®] is a trademark of the American Type Culture Collection.



You are authorized to use this product for research use only. It is not intended for human use.