

**Vero, Kidney (African green monkey), Expressing Luciferase (Luc2p)**

**Catalog No. NR-10385**

**Product Description:** Vero cells are an adherent epithelial cell line derived from the kidney of an African green monkey (*Cercopithecus aethiops*). NR-10385 consists of Vero cells engineered to stably express the Luc2p variant of luciferase.

**Lot<sup>1,2</sup>: 58602583**

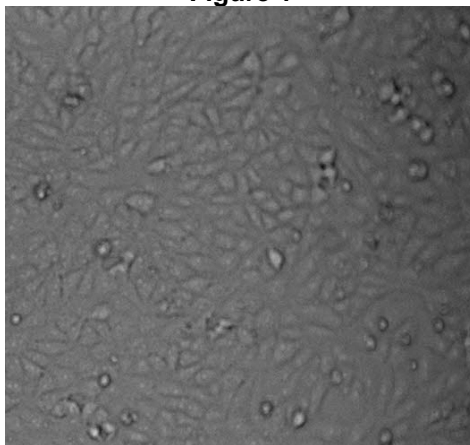
**Manufacturing Date: 15MAR2010**

TEST	SPECIFICATIONS	RESULTS
<b>Growth Properties</b>	Adherent	Adherent
<b>Morphology</b>	Epithelial-like	Epithelial-like (Figure 1)
<b>Multiplex PCR Amplification of Cytochrome C Oxidase I (COI) Gene</b>	African green monkey origin No evidence of another species	African green monkey origin No evidence of another species
<b>Total Cell Count</b>	> 1.0 X 10 <sup>6</sup> cells/vial	5.7 X 10 <sup>6</sup> cells/vial
<b>Post-Freeze Viability</b>	≥ 50%	86%
<b>Bacterial Sterility (BacT/ALERT<sup>®</sup> 3D Microbial Detection System)</b> 14-day incubation of NR-10385: i NST culture bottle, 32°C, anaerobic i AST culture bottle, 32°C, aerobic	No growth No growth	No growth No growth
<b>Mycoplasma Contamination</b> Hoechst DNA stain Agar and broth culture DNA detection by PCR of extracted Test Article nucleic acid	None detected None detected None detected	None detected None detected None detected

<sup>1</sup>The deposited material for this lot was determined by PCR to be contaminated with *Mycoplasma fermentans*. After four passages in the presence of 0.01% mycoplasma removal agent (MP Biomedicals 30-500-44), PCR tests showed the cells to be clean and free of mycoplasma contamination.

<sup>2</sup>This lot is currently at passage 10 (3 passages by the depositor; 4 passages for the preparation of a Mycoplasma-free culture; 3 passages for the growth of the distribution lot). **Note: These cells are not recommended for use beyond passage 22 as they begin to lose sensitivity.**

**Figure 1**



**Date:** 09 AUG 2010

**Signature:** Signature on File

**Title:** Technical Manager, BEI Authentication or designee

ATCC<sup>®</sup>, on behalf of BEI Resources, hereby represents and warrants that the material provided under this certificate has been subjected to the tests and procedures specified and that the results described, along with any other data provided in this certificate, are true and accurate to the best of ATCC<sup>®</sup>'s knowledge.

ATCC<sup>®</sup> is a trademark of the American Type Culture Collection.

You are authorized to use this product for research use only. It is not intended for human use.

