

**Monoclonal Anti-West Nile Virus Nonstructural Protein 1, Clone 22-NS1 (produced *in vitro*)**

**Catalog No. NR-10145**

**Product Description:** Antibody Class: IgG2 $\kappa$

Mouse monoclonal antibody prepared against the nonstructural protein 1 (NS1) of West Nile virus (WNV) was purified from clone 22-NS1 hybridoma supernatant by protein G affinity chromatography. The clone 22-NS1 antibody is reported to bind to domain II-III in the NS1 glycoprotein.

**Lot: 58607095**

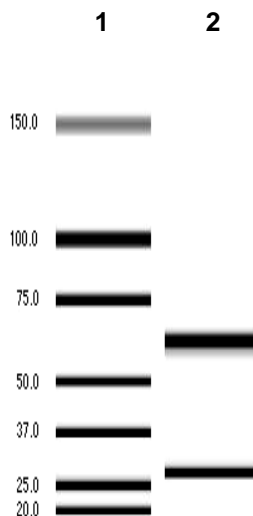
**Manufacturing Date: 14SEP2009**

TEST	SPECIFICATIONS	RESULTS
Antibody Class Determination	Report results	IgG2 $\kappa$
Experion Pro260 Analysis	Correct molecular weight (MW) for heavy and light chains Report results	Correct MW for heavy and light chains (Figure 1) 98.5 % pure
Concentration by Spectrophotometer at OD <sub>280</sub>	Report results	1.2 mg/mL
Functional Activity Indirect fluorescent antibody assay <sup>1</sup> ELISA <sup>2</sup>	Report results Report results	Fluorescence observed Reactive
Sterility	0.22 $\mu$ m filter-sterilized	0.22 $\mu$ m filter-sterilized

<sup>1</sup>Using BEI Resources NR-676 [WNV, Eg101 (Egypt 1951)]-infected Vero cells (ATCC<sup>®</sup> CCL-81™) and 1:100 and 1:300 dilutions of NR-10145

<sup>2</sup>Using a 1:50 dilution of cell lysate from BEI Resources NR-676 infected Vero cells (ATCC<sup>®</sup> CCL-81™) and a 1:670 dilution of NR-10145

**Figure 1**



Lane 1: MW Markers (kDa)  
Lane 2: NR-10145

## Certificate of Analysis for NR-10145

**Date:** 03 NOV 2010

**Signature:** 

**Title:** Technical Manager, BEI Authentication or designee

ATCC<sup>®</sup>, on behalf of BEI Resources, hereby represents and warrants that the material provided under this certificate has been subjected to the tests and procedures specified and that the results described, along with any other data provided in this certificate, are true and accurate to the best of ATCC<sup>®</sup>'s knowledge.

ATCC<sup>®</sup> is a trademark of the American Type Culture Collection.

You are authorized to use this product for research use only. It is not intended for human use.

