

**Hemagglutinin (HA) Protein from Influenza Virus, B/Jilin/20/2003, Recombinant from Baculovirus**

**Catalog No. NR-19242**

This reagent is the tangible property of the U.S. Government.

**Product Description:** Hemagglutinin (HA) protein from influenza virus, B/Jilin/20/2003 is a full-length glycosylated recombinant protein that was produced in Sf9 insect cells using a baculovirus expression vector system.<sup>1</sup> Recombinant HA protein was purified under conditions that preserve its biological activity and tertiary structure.

**Lot: 59311911**

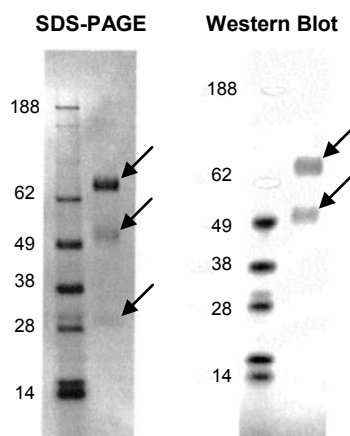
**Manufacturing Date: 04JUN2010**

| TEST  | SPECIFICATIONS  | RESULTS  |
|---|---|--|
| <b>SDS-PAGE (Coomassie Blue Densitometry)</b>                   | HA bands (HA0, HA1, HA2) account for > 90% of total density | HA bands (HA0, HA1, HA2) account for > 90% of total density (Figure 1) |
| <b>Concentration by Bicinchoninic Acid Protein Assay</b>        | Report results  | 105 µg per mL  |
| <b>Hemagglutination (HA) Assay with Chicken Red Blood Cells</b> | Report results  | 20,408 HA units per µg   |
| <b>Final Product</b><br>Quantity per vial<br>Volume per vial    | 100 µg (± 10%) per vial<br>Report results                   | 115.5 µg per vial <sup>2</sup><br>1.1 mL per vial                      |
| <b>Western Blot</b><br>Anti-histidine monoclonal antibody       | Report results  | Reactive with HA0 and HA1 (Figure 1)                                   |
| <b>Filtration</b>   | 0.22 µm filtered  | 0.22 µm filtered   |
| <b>Bioburden</b>  | Report results  | < 10 colony-forming units per mL                                       |
| <b>Endotoxin Content</b>  | Report results  | < 6.25 EU per mL   |

<sup>1</sup>U.S. Patent Numbers 5,762,939 and 6,103,526.

<sup>2</sup>Exceeds specification.

**Figure 1**



Lane 1: Invitrogen™ MW Marker  
Lane 2: 1.0 µg NR-19242

## Certificate of Analysis for NR-19242

**Date:** 03 NOV 2010

**Signature:** *Dorothy C. Young*

**Title:** Technical Manager, BEI Authentication or designee

ATCC<sup>®</sup>, on behalf of BEI Resources, hereby represents and warrants that the material provided under this certificate has been subjected by the contractor to the tests and procedures specified and that the results described, along with any other data provided in this certificate, are true and accurate to the best of ATCC<sup>®</sup>'s knowledge.

ATCC<sup>®</sup> is a trademark of the American Type Culture Collection.  
You are authorized to use this product for research use only. It is not intended for human use.

